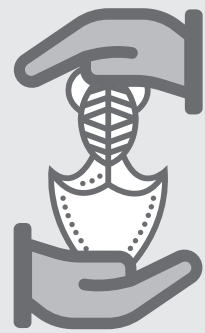


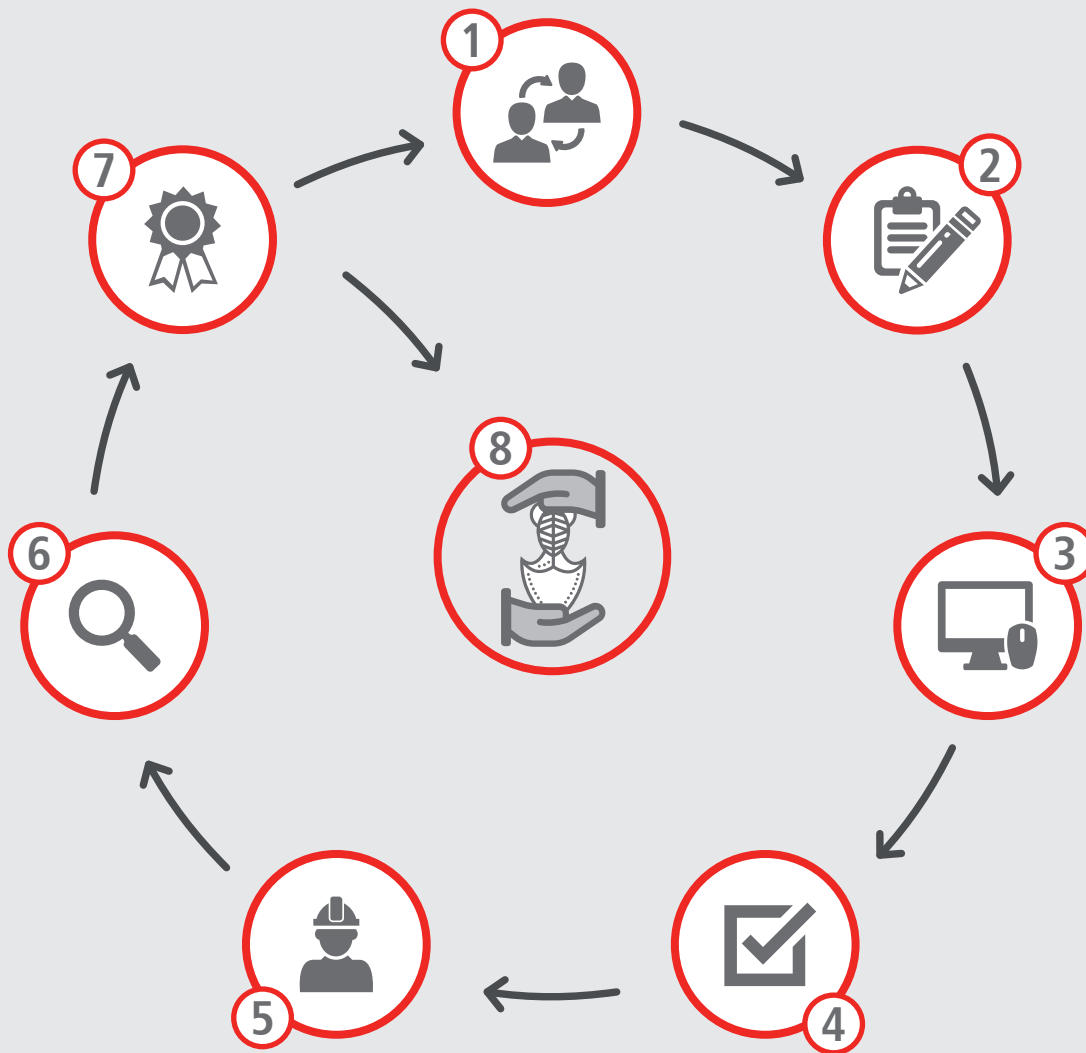
The IKO Service



A Key Stage Approach to Roofing Success



The IKO Service - A Key Stage Approach to Roofing Success



1. Consultation

We start by listening to you, your requirements and your brief for the project.

2. Survey

Carried out by our IKO skilled and experienced business managers.

3. Design

Bespoke to your project requirements and the results of the survey.

4. Solution

The result of stages 1-3 culminating in the right IKO specification for your project.

5. Installation

Reassurance that your project will be installed by vetted, Approved IKO Contractors.

6. Inspection

Visits to site before and during the project to achieve a quality, reliable installation.

7. Guarantee

A long-term commitment from you deserves an equally long-term commitment from us.

8. Aftercare

The final step, making sure your investment delivers years of faultless service.

Consultation



We start by listening to you, your requirements and your brief for the project, discussing the finer details with you so that every aspect of your new or replacement roofing system has been specified.

Amongst other things, we will look at:

- **Your building use:** Is it a residential project, a public building or a works unit?
- **Performance:** Keeping both water and noise on the outside of a building as well as meeting (and in some cases exceeding) building regulations for thermal performance.
- **Guarantee requirements:** IKO provide industry leading guarantees.
- **Budgets:** What are you looking to achieve within a given budget?
- **Program & sequencing:** Understanding that your programs are time critical. IKO will work with you to find the best solution for your project.



IKO really understand roofing. They don't just provide us with high quality, in-depth surveys and reports. They get to know the client and what their needs and requirements are. The combination of these efforts ensures that we can really add value to our own client services and provide them with the best solutions to match their budget and long term objectives.

Andy Lyons, Senior Building Surveyor.
Finetrack Property Consultants Ltd



Survey



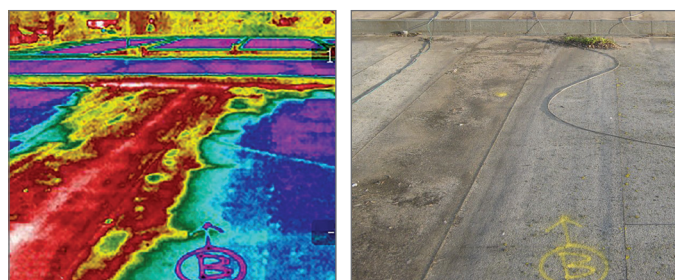
For refurbishment projects, an exhaustive assessment of the roof surface and sub layers, carried out by our skilled and experienced area business manager will give you a thorough analysis concerning the condition of your roof.

A full and comprehensive survey which would include:

- **Visual and physical inspections**, including core sample and moisture probe assessment.
- **Detailed defects analysis** and recommendations for repair or replacement
- **A comprehensive report** of the roof build up including drainage, waterproofing detailing and scope of the works.
- **Photographic records** providing guidance on the scope of works including any associated accessories.

The above investigation work will usually ensure we have the information we need to give you the best advice. However, in more challenging circumstances, we can employ the latest **infra-red imaging technology** to confirm our findings or reveal a more detailed and complete picture of the existing roof build-up.

This allows us to measure accurately the extent of any water ingress and make a more informed judgement on which areas must be stripped and which can be overlaid; providing more accurate information for planning and budgeting.



Design



IKO work closely with your in-house teams and your supply chain partners to agree on the proposed design, with IKO being responsible for confirming the proposed design meets the guarantee requirements.

IKO provide both standard detail and bespoke detail design for your roof. We design waterproofing details, our design details comply and meet current Building Regulations, codes of practice, and other regulatory bodies such as NHBC and listed buildings.

IKO design service includes:

- **Technical standard**

IKO's proposals will all provide guidance on the use of IKO's systems in line with the current Approved Documents of the Building Regulations including fire performance, thermal performance, acoustic design, drainage calculations. As well as meeting the requirement of the NHBC technical standard and design guidance defined within the British Standards Code of Practice.

- **Technical calculations**

Within IKO specification ensuring the best design options are always provided, IKO also undertake design calculations regarding thermal performance, condensation risk assessment to meet U value requirements. We also consider the location and use of the building to provide wind load calculation acting upon the roof thereby ensuring all design considerations are undertaken to ensure long term performance of a roof.

- **Falls and drainage**

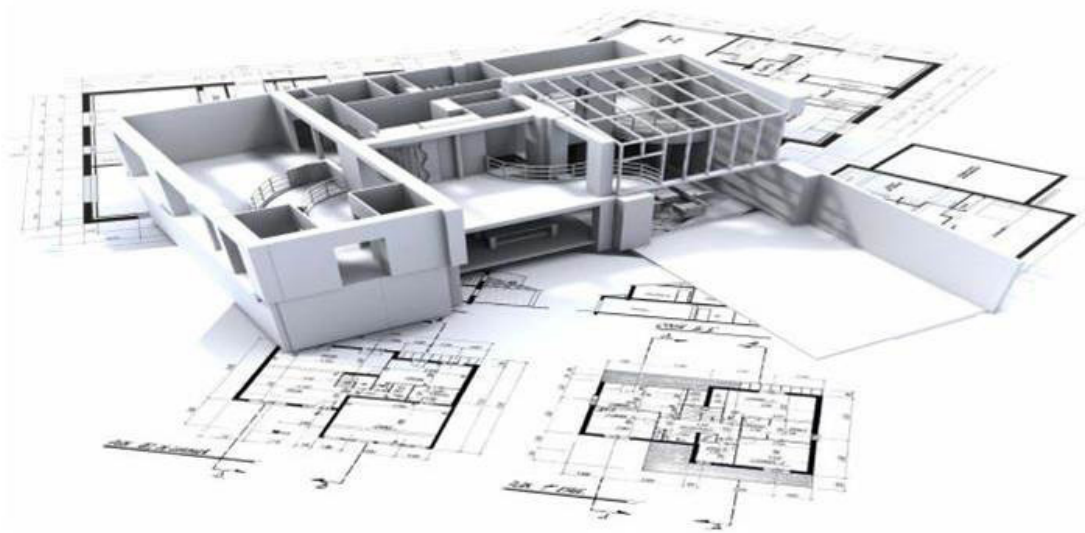
As part of IKO's specification we also provide guidance relating to falls and drainage, whereby IKO can also provide a tapered insulation design scheme which will both improve the thermal performance of your roof whilst also providing correct design falls and drainage to the roof.

- **Accessories**

Within all IKO specifications we provide guidance and recommendations on ancillary components that will compliment your roof, such as edge protections, drainage rainwater outlets, edge trims and rooflights to list just a few.

- **BIM**

IKO also have a series of BIM models available for download in rvt format to which also include guideline of how to use each specific BIM object.



Working with IKO during the initial design process provided the client with the best possible solution, both practically in allowing the works to proceed with the minimum disruption to the building user, whilst at the same time completing the project on budget and within the agreed timescales.

Steve Bates, Managing Director. Fulwood Roofing



Design Options

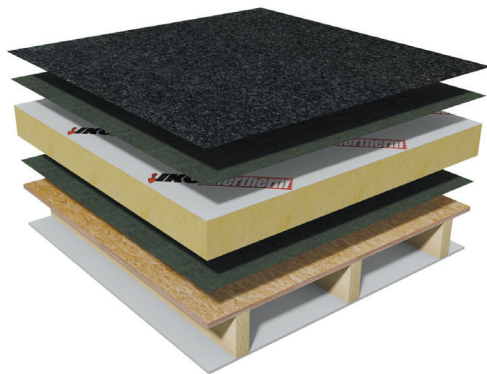


An extensive choice of roof waterproofing systems is one of the reasons we are preferred partners for so many specifiers, contractors, building managers and local authorities across the UK and beyond.

This is the result of significant investment in R&D on a global scale, the IKO range encompasses both traditional roofing systems and innovative solutions. It is this breadth and diversity which enables us to match the perfect product to every project, whether it is new build or refurbishment. A full range of system accessories and roof asset management services ensures the IKO technology selected will continue to reward your investment for many years to come.

Roof Types

Warm Roof



- Torch and flame-free applications
- Long-term durability
- High-humidity buildings (i.e. canteens)

Inverted Roof



- Protected waterproofing membrane
- Thermal stability
- Simple build-up



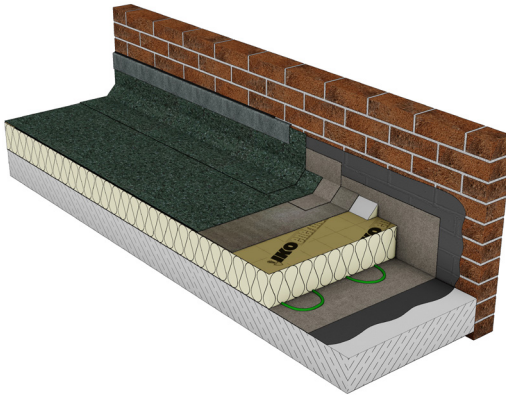
We can provide a roofing system that is guaranteed for up to 30 years, depending on the build-up and roof type.



Many of the IKO systems available are **flame-free**, meaning that under the Construction (Design and Management) Regulations (CDM), the risk of fire from a roof installation can be managed out.

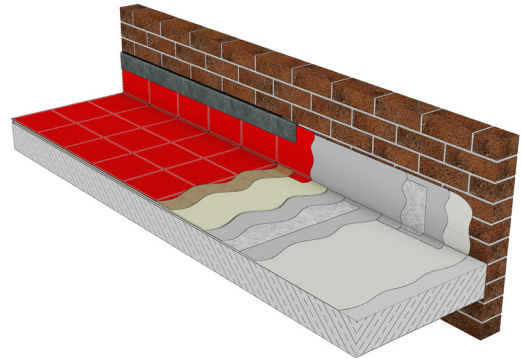
Systems / Options

Reinforced Bitumen Membranes



- Flame free installation options
- Graphite firewall technology
- Durable and robust
- Warm roof, inverted roofs and overlays

Liquid Applied Coatings



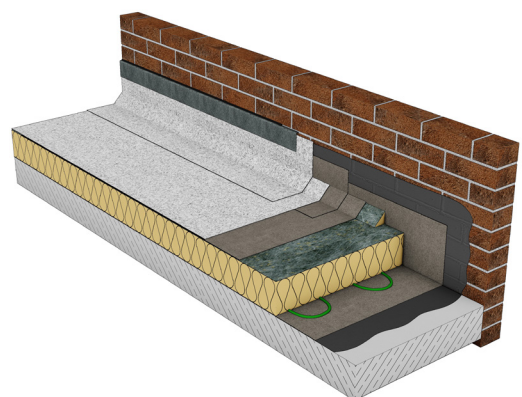
- Cold applied liquids
- Versatile range
- Roofing, balconies terraces, walkways and car parks
- Seamless
- Wide range of finishes

Green roof applications



- Anti-root Reinforced Bitumen Membranes
- Flame free installation options
- Graphite firewall technology
- Durable and robust
- Warm roof, inverted roofs and overlays

Air care technology



- IKO Carrara Cap sheet
- Reinforced Bitumen Membrane with air care technology

Design considerations:

- | | | |
|------------------------|------------------------------|-----------------------------|
| • Fire performance | • Falls and drainage | • Environmental performance |
| • Thermal performance | • Maintenance and protection | • Durability |
| • Acoustic performance | • Rooflights | • Aesthetics |

Solution



The solution that will be presented comes from combining the initial three stages within our process (Consultation, Survey and Design).

The final IKO specification document includes:

- Specification criteria
- Points of contacts
- Condition survey
- Specification summary
- Specification Build up
- Schedule of materials
- Installation guidance
- Guarantee offer
- Design details



Working with IKO means that we can provide assurance to our clients that we are always looking out for their best interests. Their surveys and specifications are always tailored to what our clients need and the network of Approved IKO Contractors gives us and our clients that extra peace of mind that the work carried out is to the highest standard.

Denis O'Rourke, Managing Director. Concept Education Services



Installation



IKO's high-performance roofing systems are only ever installed by vetted and Approved IKO Contractors.

With comprehensive selection and training criteria and nationwide network coverage, you can be confident that whatever location your project is situated in, your installation will be managed to the highest possible standards.

Under the terms of our installation contract with our Approved IKO Contractor, you'll enjoy agreed service levels for:

- Pre-contract meetings
- Dedicated project monitoring
- Qualified on-site supervision
- Reporting procedures and client liaison
- Management of variations
- Review meetings
- Regular site inspections
- Making good and site clearance
- Sign-off inspections
- Prompt and professional response to technical issues on site



Inspection



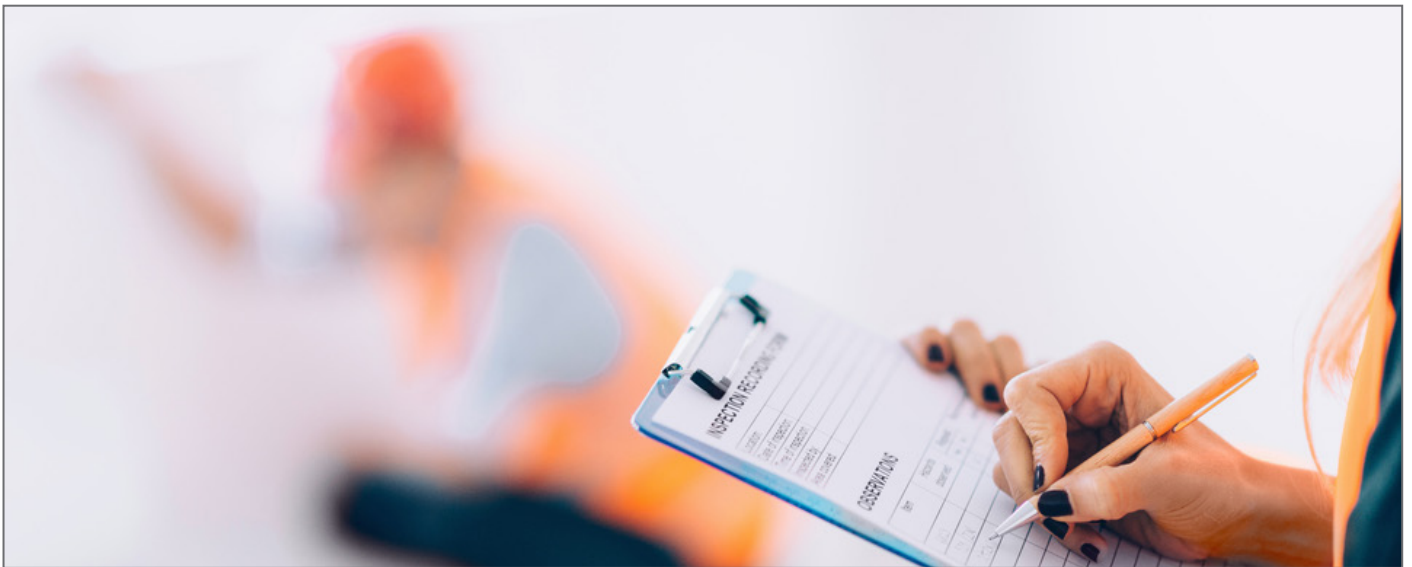
An IKO roofing solution is an investment that can deliver many years of faultless service. That kind of long-term commitment from you deserves an equally long-term commitment from us.

A framework of inspection and maintenance visits is available throughout any project, from our network of Approved IKO Contractors and IKO Technical Services.

Some new builds and refurbishment projects may require adaptations to the original specification resulting in alterations on site - inspections will help to resolve these in an efficient manner.

As part of our service, you'll benefit from:

- **Regular written reports** with photographic records
- **A centralised database** containing all the technical details of your roof from consultation to completion
- **Managed project file** if required



Guarantee



IKO offer a variety of guarantee options

All are backed by a Global leader in the waterproofing industry with over 100 years experience in delivering excellence.

IKO Guarantee options can include:

- All materials supplied by IKO
- IKO specification and design
- IKO Approved Contractor workmanship
- Insolvency of an IKO Approved Contractor

Aftercare



The final stage within the IKO 8 steps approach to roofing success, is the aftercare of your roof.

As set out in industry guidelines and BS6229, IKO can provide guidance and support in the aftercare that your roof requires. Providing not only the requirements for a sustainable service plan but the means to carry this out making sure that CDM/HSE requirements are met.

This includes industry guidance whether it be roof access/exit and fire escape ensuring that the roof can be maintained and will live beyond the guarantee period.

IKO Worldwide and in the UK

IKO is a truly global company with manufacturing facilities all over the world, shipping to nearly 100 countries.

In the UK, the IKO name has been built on a foundation of quality and an ethos of customer service which remains as strong today as it did over 100 years ago. IKO PLC is well established as a UK market leader in the design, manufacture and installation of roofing, waterproofing and insulation products and systems. We are committed to sustainability and continued investment in innovative ways of manufacturing, production and distribution within UK Manufacturing.

IKO PLC have been manufacturing in the UK for over 130 years and continue to invest in developing and producing new products to service market demand directly from the various manufacturing plants around the country. Manufacturing in the UK comes with a number of excellent benefits such as, quality control, speed of response and decreased CO₂ emissions from transportation.

UK Manufacturing Facilities

IKO PLC (Head Office), Wigan, Lancashire
Bituminous Membrane & Liquid



IKO Polymeric, Clay Cross, Chesterfield, Derbyshire
Single Ply, High Performance DPC



IKO PLC, Grangemill Quarry, Matlock, Derbyshire
Mastic Asphalt & Hot Melt



IKO Insulations, Alconbury Weald, Cambridgeshire
PIR Insulation



'Thinking Globally, Acting Locally'

IKO firmly believe in, assisting local communities in a number of ways. The Fix That Hut initiative (founded in 2006) invites applications from worthy projects which are at the heart of local communities and in need of roof repairs. The reduced carbon footprint from our UK Manufactured products, delivered locally can also have a positive impact on your own environmental credentials. Compared to some European imports, an IKO roofing system can provide over a 90% reduction in CO₂ emissions from its manufactured location to the delivery to site.



Our Family Values

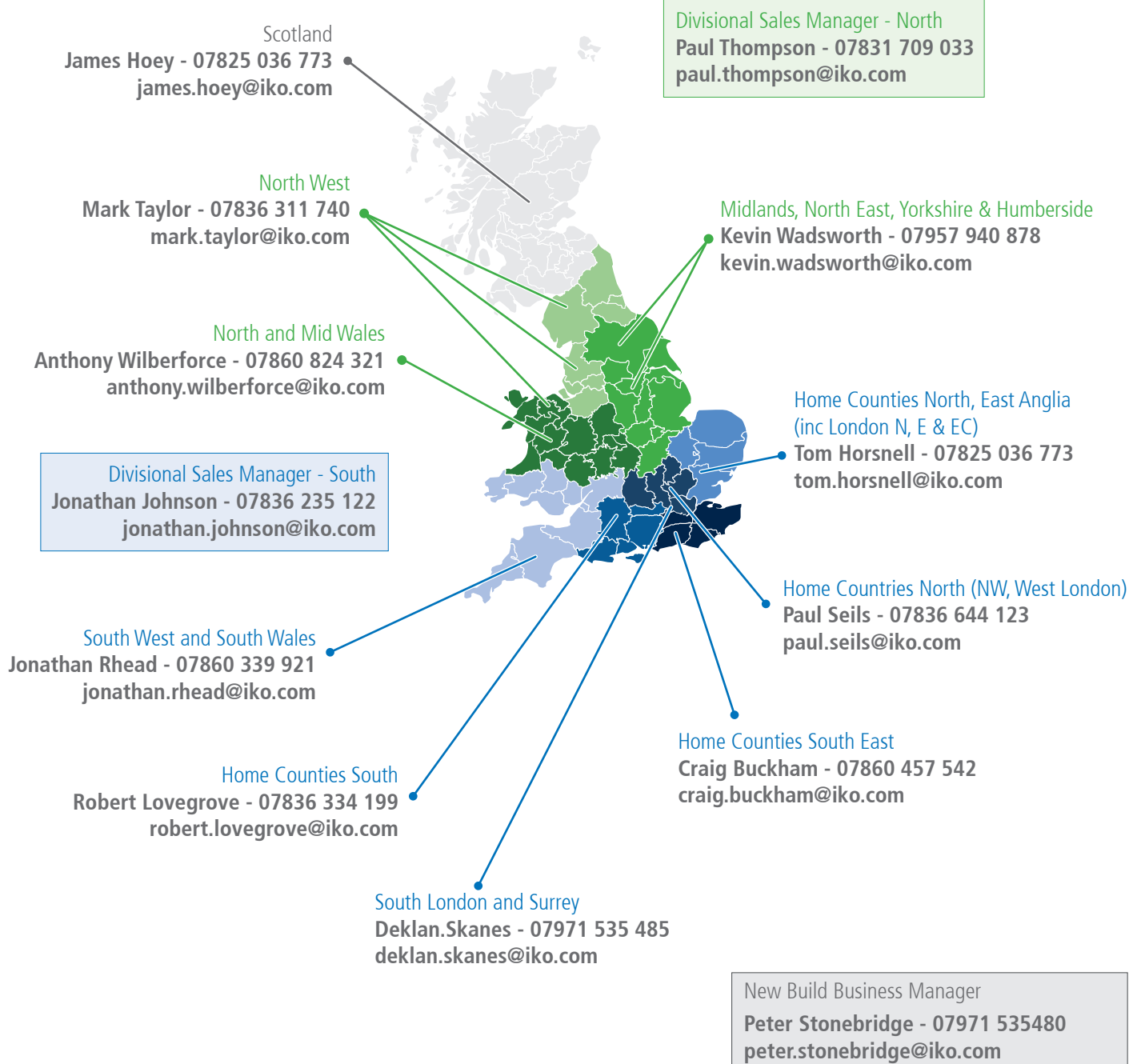
Today, more than 60 years after its founding, IKO has remained firmly rooted in its founder's core values, identifying 6 Values that play a vital role in IKO's history.

It's a combination of these timeless values, forward thinking and cutting-edge technology, remain essential for the personal and professional development of all our stakeholders and for the continued success and growth of the IKO Group, forming a fundamental part of our culture, which makes us such a unique organisation.

Building on such a rich and varied history and the expertise that comes with this, IKO aims to become the preferred supplier of Roofing, Waterproofing and Insulation. Focussing not just on selling quality products, but also elevating customer experiences at every touch point – operating with integrity and honesty and always making decisions based on the long-term interest of our customers, company and employees.

Our corporate philosophy, vision and values are universal, embraced by all members of our global family and are engrained into the ix IKO Values that make IKO what it once was, what it is now and what it strives to become in the future.





IKO PLC

Appley Lane North
Appley Bridge
Wigan
Lancashire WN6 9AB
www.ikogroup.co.uk

Sales Support

t: 01257 256 865
f: 01257 251 855
sales.uk@iko.com

Technical Services

t: 01257 256 864
technical.uk@iko.com

Member of the IKO Group

November 2022

Whilst every care is taken to see that the information given in this literature is correct and up to date it is not intended to form part of any contract or give rise to any collateral liability, which is hereby specifically excluded. Intending purchasers of our materials should therefore verify with the company whether any changes in our specification or application details or otherwise have taken place since this literature was issued.