

IKOtrim F

Technical Data Sheet – Section 11.00

PRODUCT INFORMATION

IKOtrim F is a roof edge trim, manufactured from GRP (pultruded glass fibre reinforced polyester resin). The trims are thermally inert with a low coefficient of expansion.

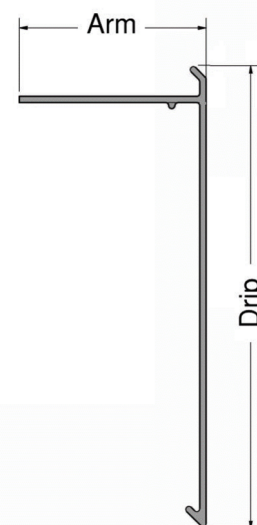
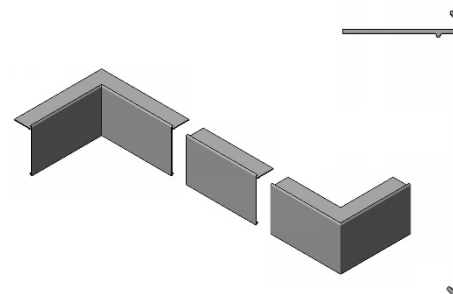
USE

Thermally inert preformed GRP edge trims for use with reinforced bitumen membrane built up roofing systems.

This product must be installed by an IKO Approved or Registered Installer. All work must be undertaken in accordance with the requirements of the specific information provided with the issued IKO Specification document, or guidance documents where applicable.

OPTIONS

Drip (mm)	Arm (mm)	Type	Black	Grey	White
65	60	3m length	WS5566BL	WS5566GR	WS5566WH
		internal corner	5576B000	5576G000	5576W000
		external corner	5577B000	5577G000	5577W000
100	60	3m length	WS5568BL	WS5568GR	WS5568WH
		internal corner	5578B000	5578G000	5578W000
		external corner	5579B000	5579G000	5579W000
150	60	3m length	WS5570BL	WS5570GR	WS5570WH
		internal corner	5580B000	5580G000	5580W000
		external corner	5581B000	5581G000	5581W000
85	40	3m length	WS5564BL	n/a	n/a
		internal corner	5574B000	n/a	n/a
		external corner	5575B000	n/a	n/a
200	85	3m length	208500BL	n/a	n/a
		internal corner	2085INBL	n/a	n/a
		external corner	2085EXBL	n/a	n/a



FEATURES & BENEFITS

Thermally inert - will not distort or warp with temperature changes.

Maintenance free - no painting required (will not rot or rust), resistant to atmospheric pollution, and UV stable.

Lightweight - easily handled, strong and durable.

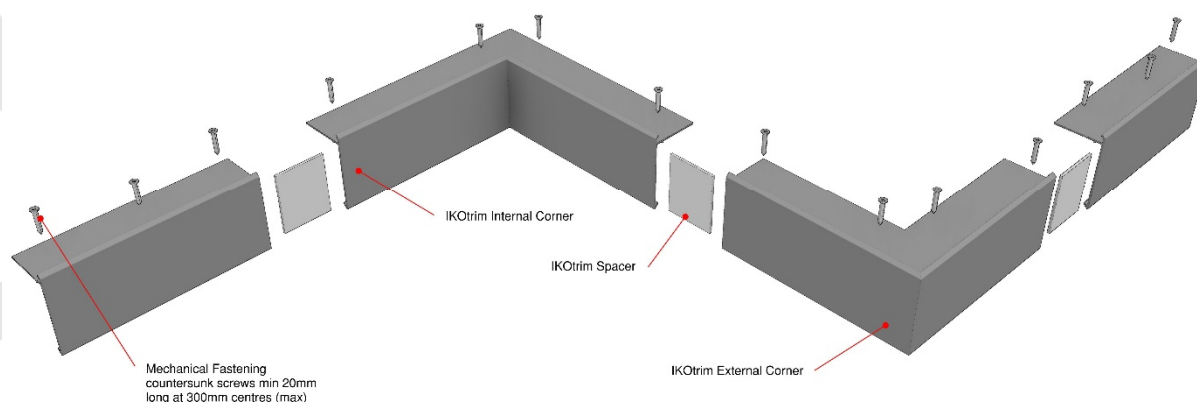
Simple installation - easily cut and drilled.

COMPOSITION

Material Type:	GRP
Form:	Pultruded Sections
Colours:	Black/ Grey/ White
Linear Unit	
Drip and Arm Dimensions:	Varies (see 'Options' table)
Length:	3m
Corner Units	
Drip and Arm Dimensions:	Varies (see 'Options' table)
From Corner Dimension:	240mm either direction
Orientation/Angle:	90° Internal/ External

INSTALLATION

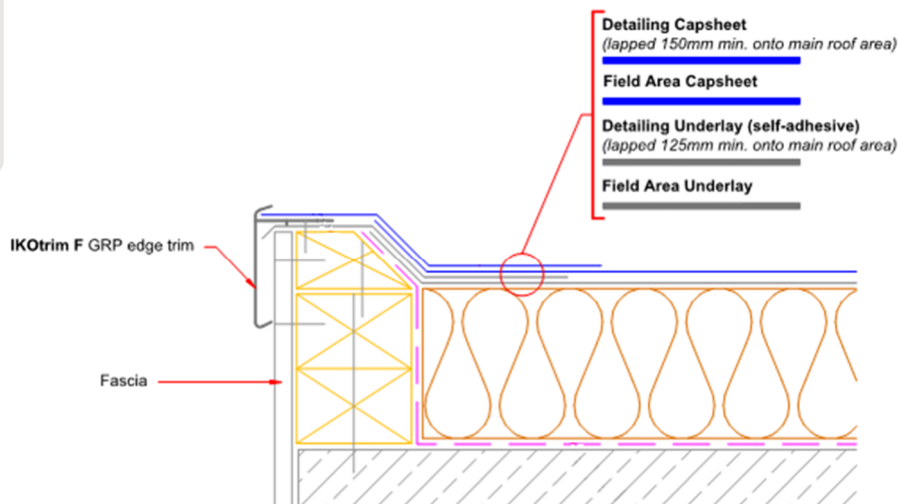
Secure IKOtrim F Edge Trim, in between the waterproofing underlay and cap sheet, mechanically fastened 30mm (max) from the ends at 300mm centre maximum (150mm centres for areas of high wind uplift). Using countersunk screws or suitable fixings (minimum 20mm long) into the sound substrate.



Any trim with a drip length of greater than 150mm must also be face fixed with mechanical fixings, to prevent wind uplift.

When fixed the drip should have a 3mm clear gap from wall or fascia.

Prime trim arm with specified primer and install specified detailing cap sheet: Pressed into channel of trim.



For further information please refer the IKO Specification Document.

DURABILITY

When installed as part of a IKO specified built-up roof system and conditions are maintained as per IKO literature, relevant Codes of Practice and UK Building Regulations, the product will last the period of the IKO specified system guarantee.

OTHER RELEVANT DOCUMENTATION

Where applicable, Material Safety Data Sheets (MSDS), Declaration of Performances (DoPs), and Third-Party Accreditations are available to view and download from the IKO website Resource Centre:

<https://ikogroup.co.uk/resource-centre/>

PRODUCT SUPPORT

Should you have any queries in relation to this product please contact one of the relevant teams below:

Technical

technical.ab@iko.com

- For Reinforced Bitumen Membranes, IKOpro and Flexia Liquid Applied Waterproofing, Pitched Roofing, IKO Hyload Structural Waterproofing

technical.ma@iko.com

- For Mastic Asphalt

technical.cc@iko.com

- For Single Ply and Permatec Hot Melt

Sales

sales.uk@iko.com

Marketing

getintouch.uk@iko.com

COMPANY ACCREDITATIONS

IKO PLC, a roofing, waterproofing, and insulation company, holds various accreditations that demonstrate its commitment to quality, safety, and environmental responsibility. These include ISO certifications for quality management and occupational health and safety, British Board of Agrément (BBA) accreditations for specific products and systems, and Factory Mutual (FM) approval for certain roofing systems.

All our manufacturing plants have BS EN ISO 9001, BS EN ISO 14001, BS EN ISO 45001, and BES 6001 accreditation, meaning we match the quality and sustainability requirements and use responsibly sourced raw materials in our production. We also re-use by-products from manufacture, wrap products in minimal packaging, and we employ a streamlined transportation network.



IKO is also a leading member of all relevant trade associations such as NFRC, BFRA, SPRA, LRWA, MAC, RSTA, BJA and LCRIG having technical experts within the technical and standards committees to help us get informed first-hand about recent updates on technical requirements for the design and installation of roofing, waterproofing, road and bridge maintenance industry products.



DISCLAIMER

Whilst every precaution is taken to ensure that the information given in this literature is correct and up-to-date it is not intended to form part of any contract or give rise to any collateral liability, which is hereby specifically excluded.

IKO reserves the right to amend and/or withdraw this document without notice.

Intending purchasers of our materials should therefore verify with the company whether any changes in our specification, application details, withdrawals or otherwise have taken place since this literature was published.