

IKO ULTRA T-F UNDERLAYS

PRODUCT INFORMATION

IKO Ultra T-F underlays are self-adhesive, polyester reinforced bitumen membranes used as underlays within built up roofing system; the membranes are coated on both sides with self-adhesive bitumen SBS elastomeric coating. The upper surface is protected with a protective film that facilitates rapid bonding of the waterproofing layers. The self-adhesive coating underside is protected by a release film.

IKO Ultra T-F Underlay

The underside has a self-adhesive bitumen coating that provides a 40% partial bond allowing vapour dispersion between the membrane and substrate. The underside has a 75mm selvedge that facilitates a rapid installation of the lap joints.

IKO Ultra T-F Detailing Underlay

The underside has a self-adhesive bitumen coating for fully bonded and waterproofing detailing applications.

Product	Surface	Product Code
Underlay	Film	62740000
Detailing Underlay	Film	62730000



USE

For use as reinforced bitumen underlay within in a built-up roofing specification system, in both new build and refurbishment projects.

IKO Ultra T-F Underlays must be used in conjunction with an IKO self-adhesive capsheets and in accordance with an IKO Specification.

IKO Ultra T-F Underlay

For use as a partially bonded underlay within a built up roofing specification system. It is to be used only for main flat roof areas and roof pitches up to 5° if reliant on adhesion alone. For roof pitches over 5° this underlay should also be mechanically fastened in accordance with BS8217 table 5 or the IKO specification document.

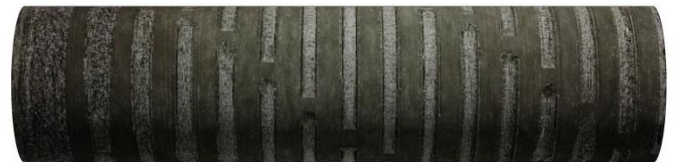


Figure 1 - partial bond profile

The unique self-adhesive profile (see Figure 1) allows for a partial bond to be achieved to the substrate therefore reducing the risk of blistering from any trapped vapour.

It has a 75mm selvedge lap to the underside to facilitate a full lap bond. (See Figure 2).

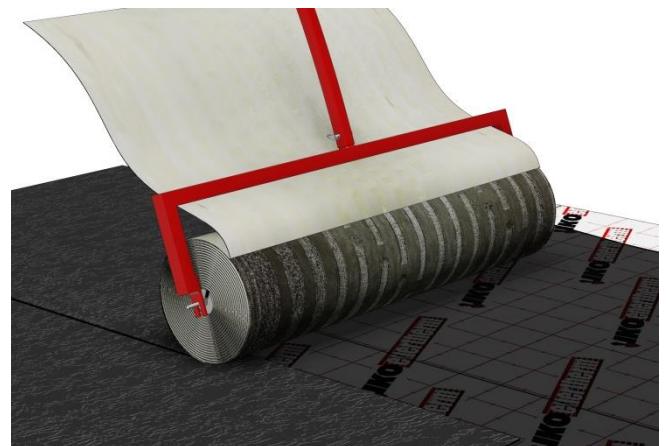


Figure 2 – application of IKO Ultra T-F Underlay

IKO Ultra T-F Detailing Underlay

For use as a fully bonded detailing underlay within a built up roofing specification system (See Figure 3).

It is to be used for all associated detailing, abutments, internal gutters and penetrations as part of a two layer built up roofing application. All detailing works must be undertaken in accordance with the IKO detail drawings and IKO specification document.

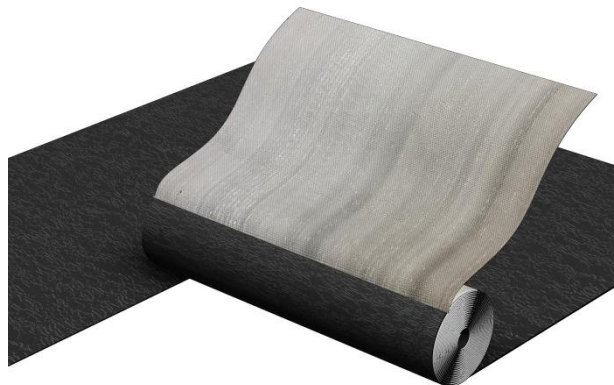


Figure 3 - IKO Ultra T-F Detailing Underlay

INDEPENDENT ACCREDITATION



2797-CPR-537586



0086-CPR-745786

The product carries a Declaration of Performance Certificate and is UK Conformity Assessed.

FEATURES & BENEFITS

High Performance – Exceptional dimensional stability and tensile strength.

High Specification – Forms part of an IKO flat roofing specification offer.

Polyester Reinforced – Robust carrier material

SBS Modification – Low temperature flexibility

Flame Free Application – Self-adhesive bonding to primed substrate with laps secured using hot air welding; no requirement for gas torches.

Partial Bond – Reduces the effect of potential blistering.

Rapid Installation – Rolls can be installed quickly with additional rapid sealing of the laps.

Surface Protection – The upper surface has a protective film finish that provides additional protection to the membrane.

COMPOSITION

Bitumen Modification:	SBS
Carrier:	Polyester (175gsm)
Form:	Roll
Colour:	Film
Length:	16m
Width:	1m
Mass/Weight:	2.50kg/m ²
Roll Weight:	40kg
Surface Finishes:	(upper) Smooth (lower) Release film
Selvedge:	None

INSTALLATION

Membrane Bond:	Self-adhesive
Lap Bond:	Self-adhesive

PERFORMANCE

For key product performance characteristics, please refer to the [IKO Declaration of Performance \(DoP\)](#)

APPLICATION

Preparation

All work must be undertaken in accordance with the requirements of the specific information provided within the IKO Specification document.

All surfaces must be clean, dry and free from grease, oil, dirt and loose material and structurally sound.

All areas to which the waterproofing system is to be bonded must be prepared and primed accordingly. Uneven surfaces may require suitable preparation to the surface prior to the application of the waterproofing.

Adhesion testing

Undertake an adhesion test to establish that a satisfactory bond can be obtained using the self-adhesive membrane to the primed substrate.

Priming

Prime the substrate with IKO Bonding Agent or IKOpro Sprayfast MPP; coverage rate per m² as per the project specification and allow to dry thoroughly before application of the membrane.

Only prime areas to be covered by the membrane within a normal working day; where primer is exposed for longer than 4 hours then the surface must be suitably cleaned and the primer reapplied.

Installation

Installation of the IKO Ultra T-F Underlays must be undertaken in accordance with the IKO T-F guidance document, an IKO specification document, BS6229 and BS8217 and by operatives familiar with the application techniques required for these products.

To all main field areas, Install the IKO Ultra T-F Underlay with 75mm side and 100mm end laps, by removing the release film and **firmly pressure rolling using a roll bar to remove any entrapped air pockets**, the surface to achieve a good bond across the full width of the membrane. Ensure that the membrane is accurately aligned, including overlaps, before removing the release film, and that it does not move as the film is removed.

Where any side or end lap joints are left exposed during the progress of the works, these must be sealed by hot air welding to facilitate a visible bead of bitumen from all laps joints.

NOTE: *It is a requirement that primed substrates left exposed over night must be re-primed with the IKOpro Sprayfast MPP or IKOpro systems Bonding Agent prior to recommencement of IKO Ultra T-F Underlay application.*

Waterproofing detailing

The IKO Ultra T-F Detailing Underlay is to be used and dressed to all waterproofing detailing areas, such as upstands, internal gutters and abutments, prior to the application of an IKO Self-Adhesive Capsheet.

The IKO Ultra T-F Detailing Underlay must be dressed and detailed at abutments to allow for linking to the IKO Ultra Air and Vapour Control Layer by 50mm minimum.

All waterproofing detailing areas and where specified, the IKO Ultra T-F Detailing Underlay is to be fully bonded throughout the prepared and primed details.

The membrane should set out (with laps staggered) and pre-creased through the detail prior to removing the release film.

The membrane must be pressure rolled to remove any air bubble or trapped air and to ensure a full bond can be achieved.

Where any side or end lap joints are left exposed during the progress of the works, these must be sealed by hot air welding to facilitate a visible bead of bitumen from all laps joints.

DISCLAIMER

As this product is utilised within an Approved Contractor network and guided by an IKO Specification document, where omission or differing information exists the IKO Specification document will take precedence.

Whilst every precaution is taken to ensure that the information given in this literature is correct and up to date it is not intended to form part of any contract or give rise to any collateral liability, which is hereby specifically excluded.

IKO reserve the right to amend and/or withdraw this document without notice. Intending purchasers of our materials should therefore verify with the company whether any changes in our specification, application details, withdrawals or otherwise have taken place since this literature was issued.