

SECTION 8.1

Ancillaries - Specification



Technical Data Sheet

November 2023

IKO PREFORMED DRIP

PRODUCT INFORMATION

IKO Preformed Drips comprise of a 0.8mm galvanised steel backing to which is factory laminated with a SBS modified bituminous membrane with a mineral finish. The bituminous membrane extends beyond the steel base to allow a lap joint with the main waterproofing membrane to be created.

Identifier	Product Code
IKO Preformed Drip	59200015



FEATURES & BENEFITS

Uniform Size - Standard units available from stock.

Quick Simple Installation - Quick, standard detail reducing installation time and creates a robust uniformed detail.

Reduced Felt Wastage - Eliminates the need to trim felt rolls to create drip details.

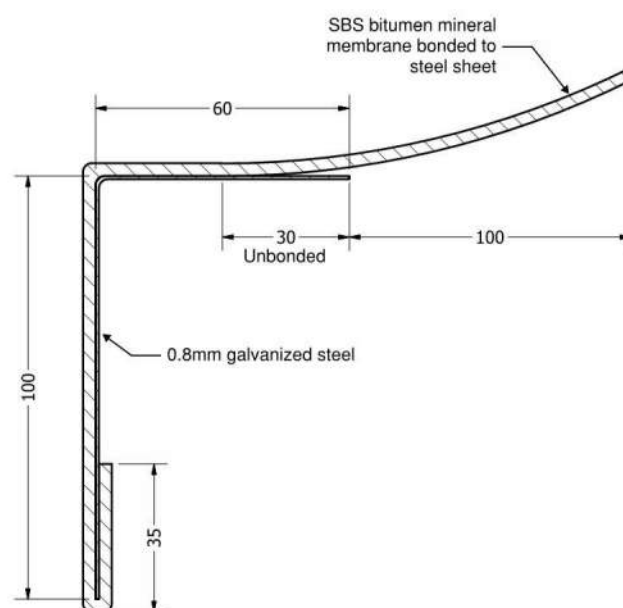
COMPOSITION

Material Type:	Galvanised Steel & Bitumen
Form:	L Sections
Colours:	Black
Overall Length:	1.6m
Drip Down Stand:	100mm
Fixing Flange	
Length:	1.5m
Thickness:	0.8mm
Drip:	100mm
Arm:	60mm
Bitumen Flange	
Overall Width:	160mm
Unbonded Section:	30mm
Overlap Flange:	100mm
Side Lap Flange:	100mm

USE

The IKO Preformed Drips are designed to be rapidly and securely finish the perimeter detailing of bituminous membrane flat roofing systems. The standard units are designed to fit most open perimeter details and are fully compatible with most IKO specified roofing systems.

This product must be installed by an IKO Approved or Registered Installer. All work must be undertaken in accordance with the requirements of the specific information provided with the issued IKO Specification document, or guidance documents where applicable.



INSTALLATION

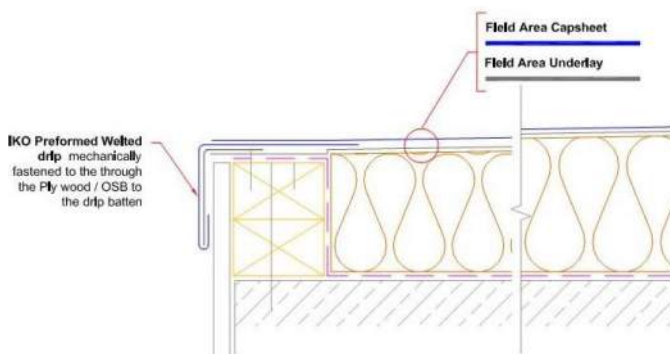
Installed as Drip Edge.

Suitable timber hard edge to be installed, this should be 10mm shorter than any proposed insulation to prevent lap build up.

Secure IKO preformed drip, in between the waterproofing underlay and capsheet, mechanically fastened 30mm (max) from the ends at 300mm centres maximum (150mm centres for areas of high wind uplift). Using countersunk screws or suitable fixings (minimum 20mm long) into the sound substrate.

When fixed the drip should have a 3mm clear gap from wall or fascia.

The integrated felt flange should be suitably welded (using an appropriate method for the specified waterproofing system) to the specified underlay. Then the capsheet installed over the top terminating the capsheet 25mm back from the perimeter edge.



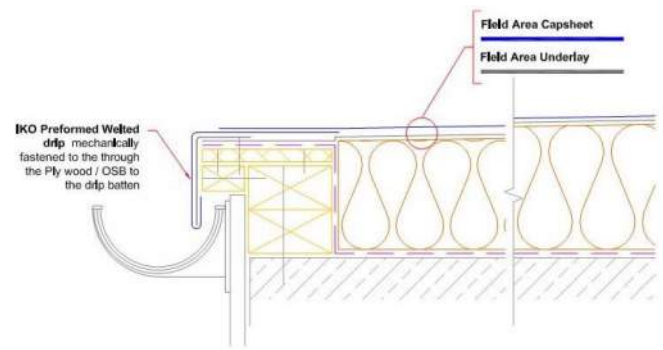
Installed as Drip to Gutter.

Suitable timber hardedge should be installed, this should be 20mm shorter than any proposed insulation to prevent lap build up with a 50mm x 50mm timber batten face fixed to the timber hardedge with suitable fixings, over this minimum 18mm OSB /Plywood should be mechanically fixed to both the timber hardedge & fixing batten, to give a suitable substrate for the Preformed Drip to be installed.

Secure IKO preformed drip, in between the waterproofing underlay and capsheet, mechanically fastened 30mm (max) from the ends at 300mm centres maximum (150mm centres for areas of high wind uplift). Using countersunk screws or suitable fixings (minimum 20mm long) into the sound substrate.

The drip should sit a minimum 20mm into the gutter but must not touch the gutter base and should over sail the back of the gutter trough by a minimum 20mm, so that any water is discharged into the gutter freely.

The integrated felt flange should be suitably welded (using an appropriate method for the specified waterproofing system.) to the specified underlay. Then the capsheet installed over the top terminating the capsheet 25mm back from the perimeter edge.



For further information please refer the IKO Specification Document.

DURABILITY

When installed as part of a IKO specified built-up roof system and conditions are maintained as per IKO literature, relevant Codes of Practice and UK Building Regulations, the product will last the period of the IKO specified system guarantee.

DISCLAIMER

Whilst every precaution is taken to ensure that the information given in this literature is correct and up to date it is not intended to form part of any contract or give rise to any collateral liability, which is hereby specifically excluded.

IKO reserve the right to amend and/or withdraw this document without notice.

Intending purchasers of our materials should therefore verify with the company whether any changes in our specification, application details, withdrawals or otherwise have taken place since this literature was issued.