



IKO METATECH

CONVENIENT, VERSATILE AND DURABLE
SOLUTIONS FOR FLAT ROOFS AND WATERPROOFING
OF BALCONIES, WALKWAYS & CAR PARKS

IKOGROUP.CO.UK

WE ARE IKO

With more than 140 years' manufacturing experience, IKO is firmly established as the UK's market leader in the design, manufacture and installation of roofing and waterproofing systems. This hard-earned reputation has been built on a foundation of high-quality products, exemplary customer service and an unwavering commitment to driving positive change and protecting what matters to our people and the planet. With this enviable position comes a responsibility to continue investing in our product solutions, our manufacturing facilities and our extensive team of experts to deliver excellence at every level.



IKO approved contractors

IKO flexia liquid applied waterproofing can only be installed by contractors and installers who have completed product induction in one of IKO's designated training facilities. The product induction covers both theoretical information and practical assessment to ensure a good level of competence with the system. Upon satisfactory completion, each operative is issued with an IKO flexia installer's card, which guarantees that the installation will meet IKO's high standards and strict specification requirements.



IKO contractor network

As well as being issued with an IKO flexia installer card for the specific IKO flexia system i.e. metatech, tanetech and hybritech, the operative's company is listed as an IKO approved contractor. Our network of IKO contractors offer specialist installation services across the UK. Contractors must meet strict criteria to attain and maintain this accreditation, undergoing stringent checks on operative competency, adequate insurance, health and safety records, quality assurance and financial security. This national network ensures the keenest competitive tendering.



On-site assistance and project monitoring

Our designated team of technical support experts can provide on-site assistance and monitoring to ensure the installation is undertaken in accordance with IKO's specification and in line with the requirements of IKO's guarantee.



The IKO guarantee

IKO flexia systems come with a range of comprehensive and robust guarantees covering both our waterproofing system materials and the workmanship of the installing contractor. The type of guarantee and level of cover is dependent on the application.

EFFICIENT AND EFFECTIVE WATERPROOFING

Liquid applied waterproofing systems offer several advantages for roofs, walkways, balconies, podiums and car parks in construction. Liquid applied systems don't require heat for application, making them safer and more convenient to use.

Typically liquid applied resins can be easily applied using a brush, roller or in the right environment sprayed onto the surface. Liquid applied waterproofing systems offer compatibility over a large range of substrates, including concrete, metal, wood, plastics, bituminous and single ply membranes ensuring flexibility in construction projects. With seamless applications liquid applied systems offer protection against water infiltration, leaks, and other environmental elements whilst maintaining durability and resilience, offering long-term protection against weathering, UV rays, and chemical exposure.

While liquid applied waterproofing systems offer numerous advantages, choosing the right system depends on various factors including the specific project requirements, climate conditions, substrate type, and budget constraints. Consulting with IKO experts can help determine the most suitable waterproofing solution for a particular project

Why use IKO metatech liquid waterproofing?

- ✓ Seamless monolithic membrane with no end laps or side joints
- ✓ Cold application, no hazardous hot works
- ✓ Ideal for complex details and limited access applications
- ✓ Adheres to most substrates
- ✓ Choice of colours and aesthetic finishes (*MOQ applies)
- ✓ Approved and certified by BBA and ETA

Scope of application

IKO's liquid waterproofing membranes are versatile and can be used in a wide variety of applications, such as:

- ✓ Roofs and roof details
- ✓ Balconies, terraces and walkways
- ✓ Car park top decks and intermediate decks
- ✓ Special projects, such as wind turbine bases, water basins and ponds

FLAT ROOFS

IKO metatech encompasses a range of high-quality liquid waterproofing systems using innovative Polymethyl Methacrylate (PMMA) technology, this is an ideal waterproofing solution for a variety of roofing and waterproofing projects, including uninsulated, warm and inverted applications, helping to protect the structural integrity of the building beneath.

Why choose IKO metatech?

IKO metatech liquid waterproofing systems offer many benefits, including:

- ✓ Fully reinforced waterproofing
- ✓ Seamless monolithic membrane
- ✓ UV stable
- ✓ Hydrolysis resistant
- ✓ Substrate compatibility including concrete, timber, bituminous, metal and plastics
- ✓ Zero fall flat roofs in inverted flat roof applications only
- ✓ Large temperature application window 5°C - 35°C
- ✓ Choice of colour and finishes available (*MOQ applies)



BALCONIES, TERRACES, WALKWAYS

Reinforced and durable

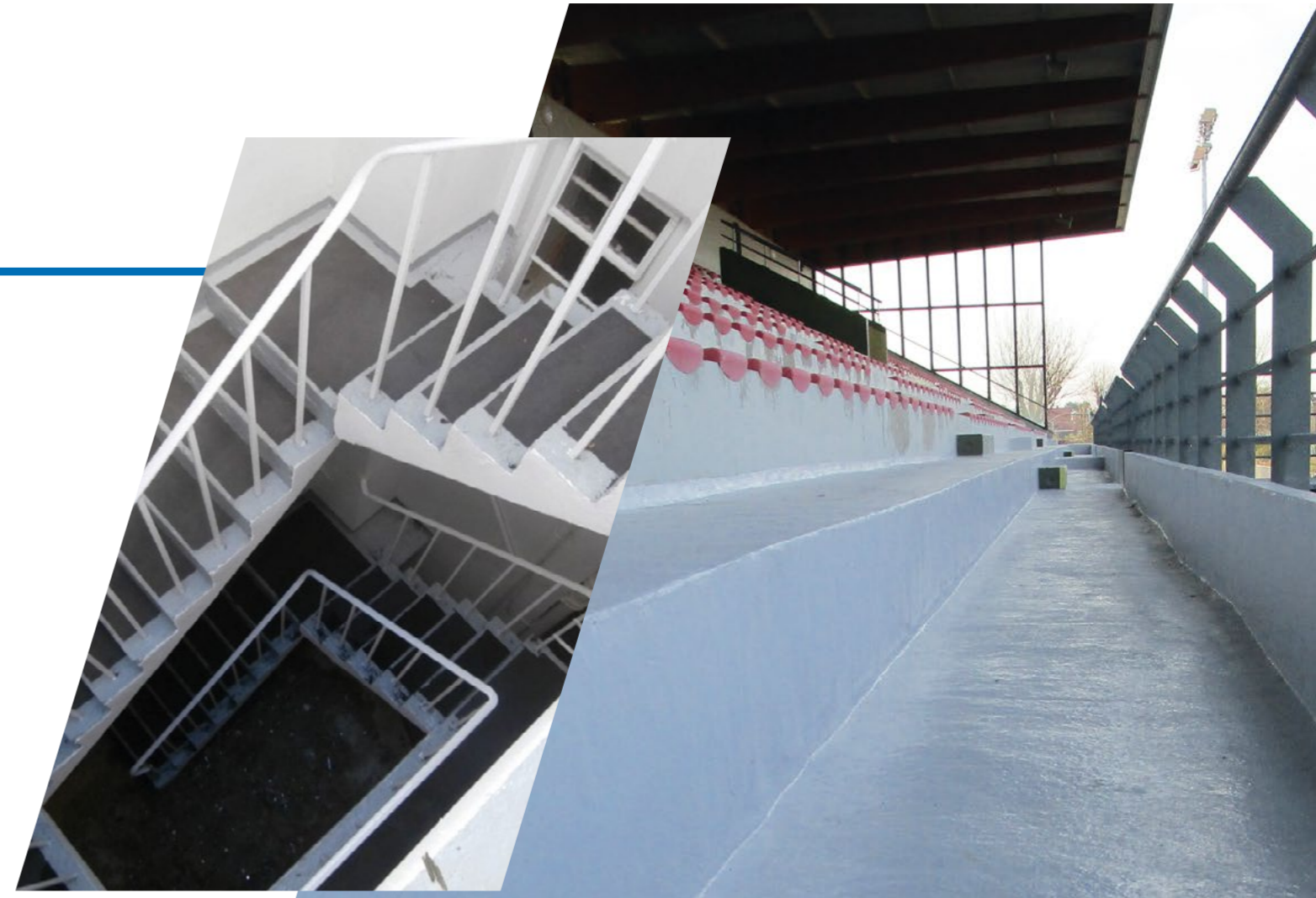
IKO metatech systems can be suitable for a range of application including those that take regular pedestrian foot traffic, whereby a IKO protective wear layer is applied to prevent damage to the waterproofing layer and add an aesthetic highly durable slip resistant finish.

Simplifying complex details

It is often difficult to encapsulate and waterproof complicated details, upstands, thresholds, penetrations, skylights and balustrades but the use of IKO metatech can help overcome these issues. The system also benefits from a number of complementary ancillary items, which ensures a smooth and straightforward installation.

Building creativity

IKO metatech offers an extensive range of design options for a bespoke, tailored finish, including different colour choices of quartz and microchips.



Why use IKO metatech cold applied liquid waterproofing for balconies and roof terraces?

- ✓ Durability
- ✓ Fast curing
- ✓ Flexibility
- ✓ Chemical resistance
- ✓ Seamless application
- ✓ Low maintenance
- ✓ Hard wearing slip resistant surface finishes
- ✓ Range of colours and finishes available (*MOQ applies)



CAR PARKS

Flexible solutions

Tailored for the demands of multi-storey car park environments, our systems epitomize flexibility, toughness, and durability. Specifically designed for flat roof waterproofing, they extend their capabilities seamlessly to various applications, including walkways, balconies, car park top decks, intermediate decks, and ramps. Noteworthy is their exceptional resistance to wear and resilience against de-icing salts and oil pollution, making them ideal for the challenges posed by multi-storey car park settings.

IKO's multi-purpose systems offer comprehensive solutions, integrating waterproofing, protective, and driving layers—all in one. With a nominal thickness of approximately 8 mm, these systems impose a negligible load on the structure, minimising structural effect while meeting the stringent requirements of multi-storey car park constructions.

Minimised disruption

Recognising the need for swift and efficient refurbishments in bustling multi-storey car park facilities, our PMMA-based liquid waterproofing systems offer rapid installation and fast-curing capabilities, significantly minimising disruption, allowing for timely and hassle-free refurbishments in high-traffic environments, ensuring the longevity and functionality of multi-storey car park structures.

Why use IKO metatech liquid waterproofing for car park top decks, intermediate decks and ramps?

- ✓ Seamless membrane
- ✓ Fully reinforced and lightweight
- ✓ Rapid and flame-free installation
- ✓ Rapid commissioning
- ✓ Different colour combinations available (*MOQ applies)
- ✓ Wear-resistant lines and zone marking
- ✓ Slip resistant finishes available





DEMARCATIION & PERSONALISATION

Improved safety

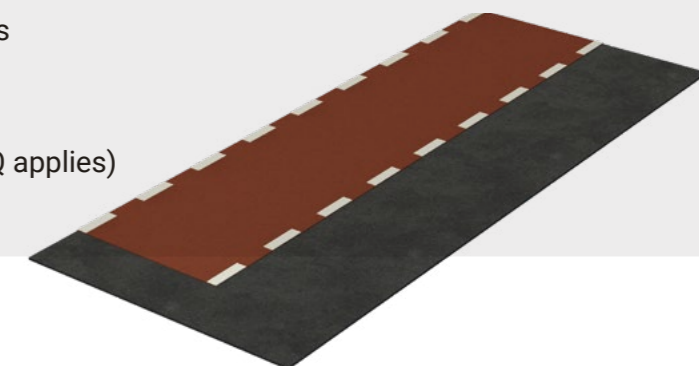
IKO metatech can be used to create clearly-defined, slip-resistant routes, helping to safely direct authorised personnel, maintenance teams and pedestrians to areas they need access to.

The solution is also ideal for zone marking, cycle paths, bridges and forecourts.



Why use IKO metatech liquid waterproofing/protection for walkways and roof demarcation?

- ✓ Seamless application
- ✓ Flexible and durable
- ✓ Customisation available
- ✓ Simple installation
- ✓ Added protection
- ✓ Low maintenance
- ✓ Versatility
- ✓ Improved safety and awareness
- ✓ Slip-resistance finish available
- ✓ Range of colour finishes (*MOQ applies)



SPECIAL PROJECTS

Seamless single solution

From wind turbine bases and water basins to foundation walls and complex joints, cold applied When versatility, durability and longevity are essential IKO metatech cold applied liquid waterproofing can deliver in all areas, from wind turbine bases and water basins to intricate and complex joints. metatech ensures a quick and simple installation process but also boasts rapid curing, making it an efficient and time saving option. One of its standout features is the flame-free application, promoting safety while achieving a flawless, seamless, and monolithic finish. BBA and ETA certification ensures the systems meet the stringent demands from industry. Whether addressing the unique challenges of large-scale infrastructure projects or intricate architectural designs, IKO metatech cold-applied liquid waterproofing offers a proven solution, delivering both performance and peace of mind.

Why use liquid waterproofing for special projects?

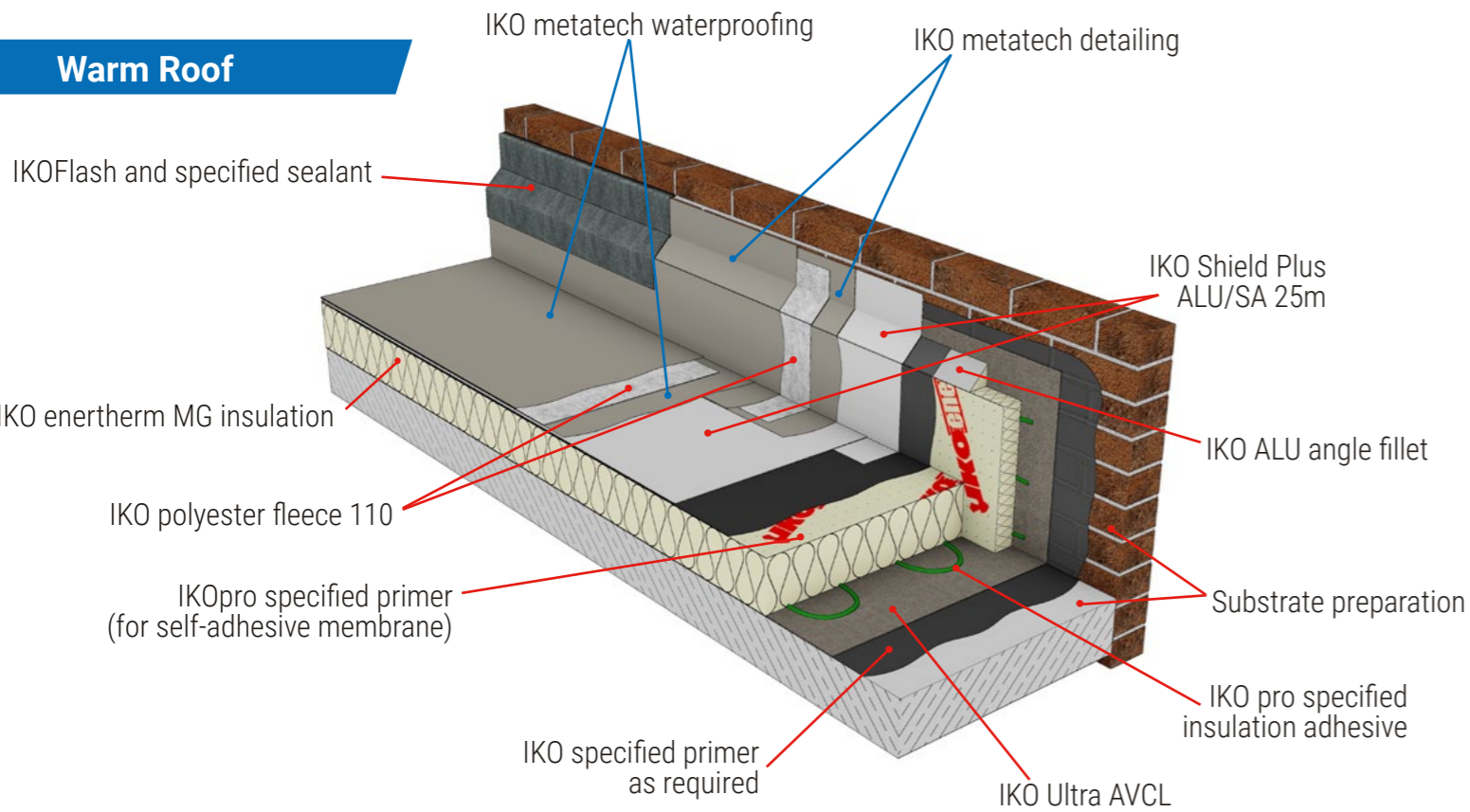
- ✓ Fully reinforced application
- ✓ Seamless membrane
- ✓ Flame-free installation
- ✓ Quick application
- ✓ Crack bridging potential up to 2mm
- ✓ Suitable for difficult details



TYPICAL BUILD-UPS FLAT ROOFS

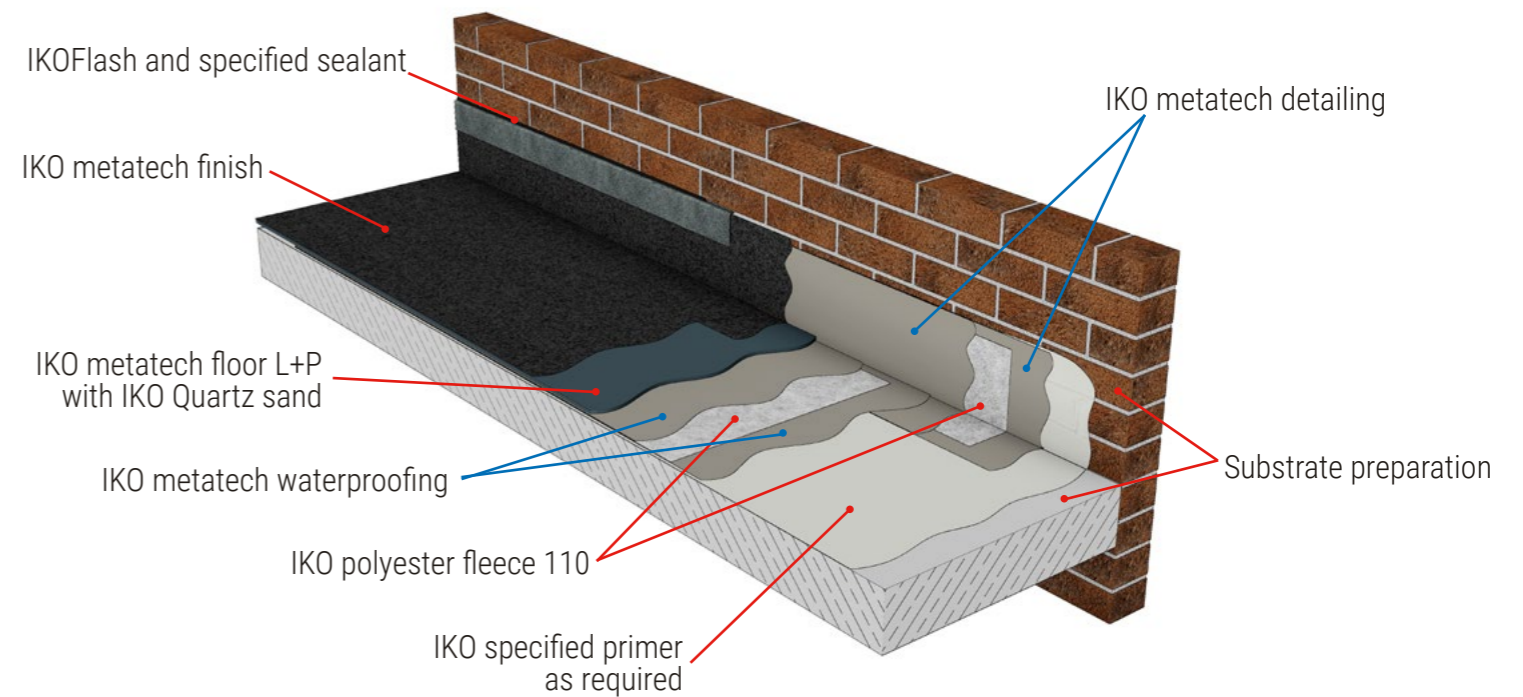


Warm Roof

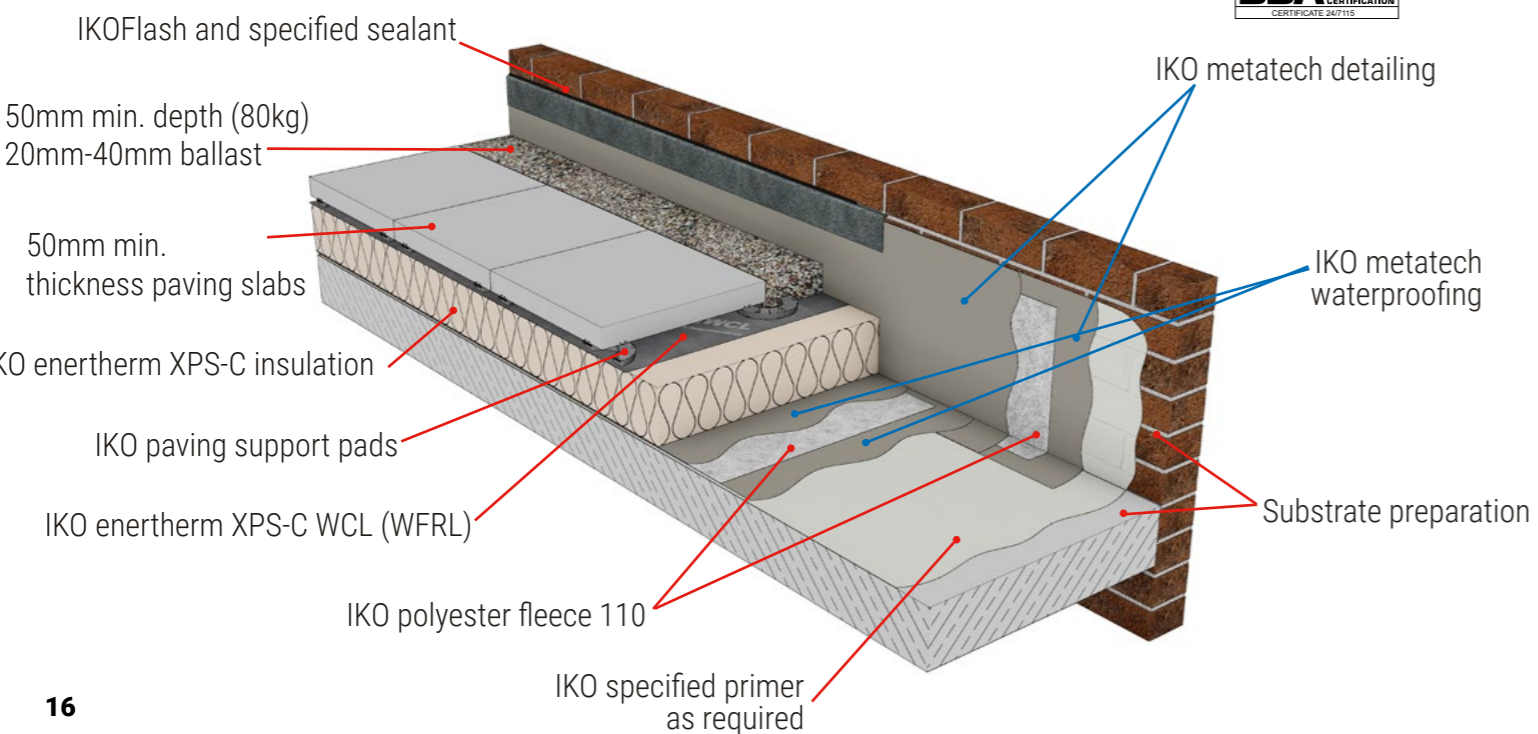


TYPICAL BUILD-UPS BALCONIES, TERRACES & WALKWAYS

Typical Balcony System Finish



Inverted Roof



PROTECTING WHAT MATTERS

At IKO, we're committed to positive change, limiting the impact of our actions, and reducing the carbon footprint of projects. Furthermore, our shorter delivery journeys to site not only result in quicker lead times but a reduction in CO2 emissions from transportation, benefitting the local community and the environment.

As a responsible roofing manufacturer, we have introduced a range of initiatives to work towards achieving our ESG goals, from establishing our ambitious science-based targets to mental health support and sustainable manufacturing processes – and our efforts extend beyond our employees. Whether it's the people who live in the communities around our manufacturing sites, or those who work, live or learn under our roofing and waterproofing solutions, we aim to protect what matters to them most and create a positive legacy.



APPRENTICESHIPS

Nurturing future talent is essential to maintaining the lifeblood of manufacturing and construction and we have a dedicated apprenticeship scheme to welcome new starters into the industry. We have 10 live apprenticeships currently in engineering, production and business development and six apprenticeships have been completed in the past two years.



WORK EXPERIENCE

We believe that real-life work experience can be a major advantage when it comes to looking for full time employment. As such, we provide opportunities for young people to join the IKO team on a temporary basis to develop their professional skills with 'on-the-job' learning.



TRAINING CENTRES

As part of our commitment to supporting young people starting careers in construction, we regularly donate products and materials to colleges across the UK to aid practical, informative roofing training.



WIGAN YOUTH ZONE

IKO is proud to sponsor Wigan Youth Zone, which is one of the largest youth zones in Europe. Our staff also regularly attend open days and events at the centre, educating young members about the manufacturing and construction industries.



SUPPLY CHAIN SUSTAINABILITY SCHOOL

As an official partner of the Supply Chain Sustainability School, IKO works closely with industry leaders to inspire and advise on more environmentally-conscious operations in the construction industry.

BES 6001
Responsible Sourcing
www.greenbooklive.com



IKO PLC
Appley Lane North
Appley Bridge
Wigan
WN6 9AB

t: 01257 255771
e: getintouch.uk@iko.com
Member of the IKO Group

IKO Ireland
Unit 502
Northwest Business Park
Dublin
Ireland
D15 CP3V

e: waterproofing@iko.ie
t: +353 1 88 55 090
www.iko.ie

IKO Northern Ireland
2-4 Old Church Road
Newtownabbey
Co. Antrim
BT36 7LU
Northern Ireland

t: +44 2890 867079
e: waterproofing@iko-ni.com
www.iko-ni.com

Whilst every care is taken to see that the information given in this literature is correct and up to date it is not intended to form part of any contract or give rise to any collateral liability, which is hereby specifically excluded. Intending purchasers of our materials should therefore verify with the company whether any changes in our specification or application details or otherwise have taken place since this literature was issued.

August 2024

IKO GROUP.CO.UK