



IKO SYSTEM ACCESSORIES

SPECIFIED SOLUTIONS



IKOGROUP.CO.UK

CONTENTS

03	We are IKO
04	Manufactured in the UK. Made for the future.
06	Cold applied liquid systems
10	Hot melt systems
12	Mastic asphalt systems (inc. car parks and HGV decks)
16	Single ply (polymeric) systems
24	Reinforced bituminous membrane systems
30	Highways & civils systems
35	The IKO service
36	Protecting what matters

WE ARE IKO

With more than 140 years' manufacturing experience, IKO is firmly established as the UK's market leader in roofing, waterproofing and insulation solutions, along with our fast-growing highways maintenance range. This hard-earned reputation has been built on a foundation of high quality products, exemplary customer service and an unwavering commitment to driving positive change and protecting what matters to our people and the planet.

With this comes a responsibility to continue investing in our product solutions, manufacturing facilities and extensive team of experts to deliver excellence at every level.



MANUFACTURED IN THE UK. MADE FOR THE FUTURE.

Our strategically-located manufacturing plants around the country, supported by our nationwide network of building contractors and distributors, make IKO best placed to provide our UK-wide customers with a reliable, responsible and responsive service.

We're BES 6001-accredited, which means our products and raw materials are responsibly and, where possible, locally sourced. All of our sites are ISO 9001 and ISO 14001-certified.

All IKO projects are regularly monitored during installation by our dedicated Technical Services department, helping maintain full specification compliance and ensuring any site queries are handled quickly and effectively.

In addition to manufacturing these systems to the highest standard and minimising our environmental impact, we also provide dedicated project design support. The IKO team is on hand to provide specification advice, technical drawings, wind uplift and thermal calculations, site visits and post-project support, such as maintenance and comprehensive guarantees.



APPLEY BRIDGE



CLAY CROSS

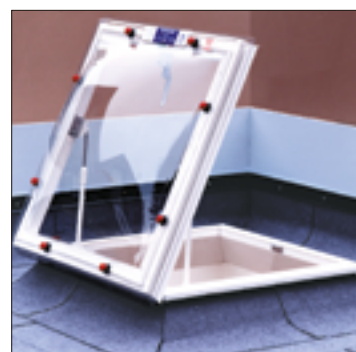


GRANGEMILL



ALCONBURY

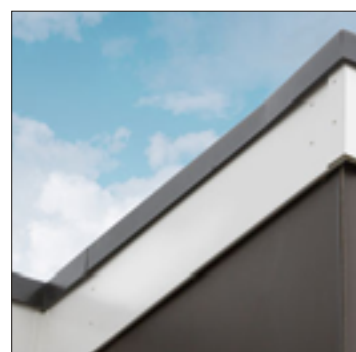
COLD APPLIED LIQUID SYSTEMS



IKO Superlite Rooflight

IKO Superlite Rooflights are a range of high-quality, triple glazed, and UV-protected thermoformed polycarbonate domes, as well as a vast range of multi-cell white PVC upstands.

The whole unit U-Value exceeds the requirements of Approved Document L 2006. The polycarbonate dome is non-fragile and fire rated in accordance with EN13501-1. Suitable for installation in a bituminous membrane, polymeric single ply, cold applied liquid, or mastic asphalt systems. Double skin domes are also available.



IKO GRP Edge Trim – L (for liquids)

IKOtrim GRP Roof Edge Trims are manufactured from pultruded glass fibre reinforced polyester resin. The trims are thermally inert with a low coefficient of expansion. The adaptability of the IKOtrim range means they can be used with all types of cold applied liquid roofing solutions.



IKO ULTRA and IKO Standard Internal Refurbishment Rainwater Outlets

Rainwater outlets for use within new build and refurbishment flat roofing, balcony and terrace applications. Our 'elite' rainwater outlets, together with ancillary components, are only suitable for use within IKO reinforced bitumen membrane systems and IKO cold applied liquid systems on new build projects.



IKO Internal Rainwater Outlets – Alutec

Designed for applications where an angle is formed by the intersection of vertical and horizontal surfaces (for example, where a balcony or roof meets a parapet wall). They can be installed to provide either vertical or horizontal run-offs and are suitable for use with most types of waterproofing membrane.



IKO Flash – Cover Flashing

IKOfash is a lead-free flashing material which is ideal for use in areas such as chimney and abutment flashings, roof lights and pitched valley linings. IKOfash is extremely easy to install and offers a modern alternative in situations where lead flashing would traditionally be used.



IKOpro Stickall Mastic

IKOpro Stickall is a dense, all weather, bituminous sealing glue that remains plastic under normal temperatures and adheres well to most building surfaces, including wet surfaces. It is a multi-purpose product with high permanent adhesive strength, good UV stability and resistance to sagging at high temperatures.



IKO Lightning Conductor Clips – Liquids

The IKO Lightning Conductor Clips are easy to install and offer safe and secure bonding. Specially designed and manufactured to allow for thermal movement of the conductor and are fully compatible with all roofing systems.



IKO Paving Support Shims and Pads

IKO Paving Support Shims offer a finer level of support providing a height of 3mm per shim. IKO Paving Support Pads incorporate spacing nibs to maintain a consistent drainage gap between pavings.

They are easily divided into halves and quarters, for use at edges and corners of paved areas. IKO Paving Support Shims and Pads are primarily for use on slightly uneven flat roof areas.



IKO Adjustable Paving Supports

IKO Adjustable Paving Support Pads are designed to be used where fine adjustment in height is required in order to obtain a level paved area on a roof deck. This is normally the case where the roof has been laid to falls for drainage, or where the deck is uneven.



IKO Integrated Fixing Point

IKOfix Integrated Fixing Point provides a structural connection to the building substrate whilst maintaining the integrity of the capsheet. It is fixed to the substrate through the roofing membrane using appropriate fixings.

Designed for use on cold and warm roof constructions and can be used for applications where a connection to the building structure is required, such as using solar PV or solar thermal panels.



IKO Roofport

A preformed roof penetration unit that provides a versatile solution for allowing small cabling and lightning conductors to pass through a roof without compromising the waterproofing integrity. The powder coat cover unit is completely removable allowing easy installation of cabling.



IKO Roofbox

The ROOFBOX® weathering system is specifically engineered for service penetrations, offering a proprietary and assured resolution to the challenges typically encountered when passing pipes, cables, and ducts through the waterproofing layer on the roof.

Tailored for each project, our roof cabinets are designed to be standard, modular, prefabricated, and suitable for retrofit applications. These modern insulated units are constructed from aluminium and coated with powder.



IKOfash-e Lead Free Flashing

IKOfash-e is a lead replacement product with the same look and feel of traditional lead. IKOfash-e has no harmful effects on people and the environment and is a second-generation lead replacement that is very easy to use. IKOfash-e is applied in exactly the same way as normal lead and is equivalent to Lead Code 5. The product has a guarantee for 20 years and a lifetime expectancy of 50 years.



IKOfash-e Adhesive

IKOfash-e Adhesive is a cold-applied, hybrid polymer-based adhesive sealant with high initial bond strength for bonding and sealing IKOfash-e Lead Free Flashing. It bonds without primer on almost all materials used in the construction industry, such as concrete, brick, aluminium, galvanised and stainless steel etc.



IKO Strike flexia Lightning Conductor Clips

IKO Strike flexia Lightning Conductor Clips are for securing Lightning Conductor Tape (25mm x 3mm) to cold applied liquid roofing systems. IKO Strike flexia Lightning Conductor Clips consist of a purpose-made clip with a fixed pad (approximate size 95mm x 95mm) bonded to the roof.

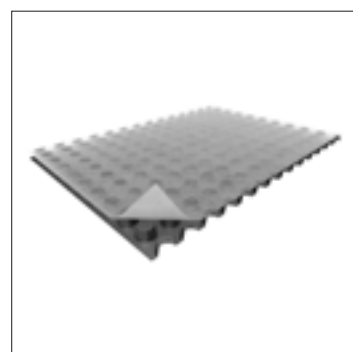
HOT MELT SYSTEMS



Rainwater Outlets

- IKO Elite Extended Grate Outlets
- IKO Elite Parapet/Gulley Outlets
- IKO Preformed Parapet Chutes

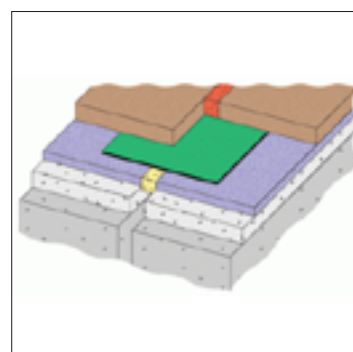
All rainwater outlet components are manufactured from marine grade aluminium to give an extensive life expectancy of at least 50 years. To ensure ultimate reliability and confidence, the elite rainwater outlet range has been rigorously tested to withstand water depths surpassing 1m.



Drainage Layers

- IKO Plasdrain 6
- IKO Plasdrain 12
- IKO Plasdrain 25

The IKO Plasdrain drainage composite comprises the filter layer, the drainage layer, and the separation and protection layer as one integrated unit. It is installed immediately above the protection layer on podium deck projects.



Expansion Joints

Radflex 125

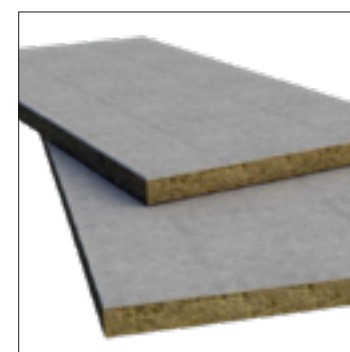
The Radflex 125 expansion joint provides a durable and versatile permanent joint, which is easily installed and maintenance-free. Capable of accommodating a wide range of conditions, it is equally effective on an asphalt-covered, traffic-free roof or a bridge deck. It can be used in conjunction with most waterproofing systems.



Upstand Insulation

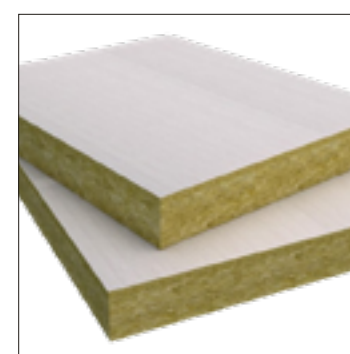
IKO Etherm XPS Upstand Board

IKO Etherm XPS Upstand Board is a laminate of IKO enertherm high-performance, rigid extruded polystyrene (XPS), with a tough, weather resistant facing board. IKO Etherm XPS Upstand Board is used for the thermal insulation and protection of upstand and parapet walls.



IKO Etherm MW Upstand Board

IKO Etherm MW Upstand Board is a laminate of a dense, stone wool insulation slab bonded to a tough, weather resistant facing board. It is used for the thermal insulation and protection at upstands, parapet walls and protrusions where a non-combustible insulation solution is required.



IKO MW Multi-fix

IKO Etherm MW Multi-fix is a dual-density stone wool insulation board. It is used for the thermal insulation in a variety of warm flat roofing system applications where a non-combustible and/or acoustic insulation solution is required.

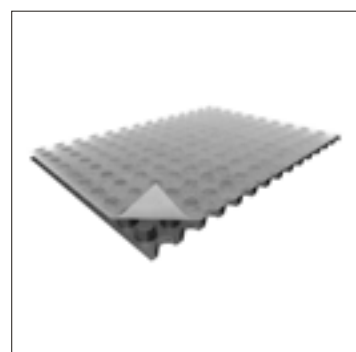
MASTIC ASPHALT SYSTEMS (INCL. CAR PARKS & HGV DECKS)



Rainwater Outlets

- IKO Elite Extended Grate Outlets
- IKO Elite Dome Grate Outlets
- IKO Elite Flat Grate Outlets

All rainwater outlet components are manufactured from marine grade aluminium to give an extensive life expectancy of at least 50 years. To ensure ultimate reliability and confidence, the elite rainwater outlet range has been rigorously tested to withstand water depths surpassing 1m.



Drainage Layers

- IKO Plasdrain 6
- IKO Plasdrain 12
- IKO Plasdrain 25

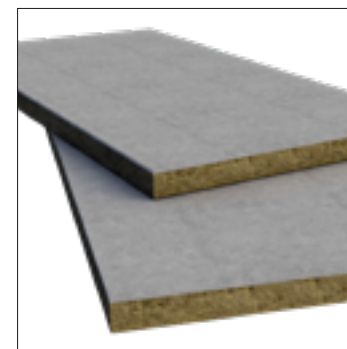
The IKO Plasdrain drainage composite comprises the filter layer, the drainage layer, and the separation and protection layer as one integrated unit. It is installed immediately above the protection layer on podium deck projects.



Upstand Insulation

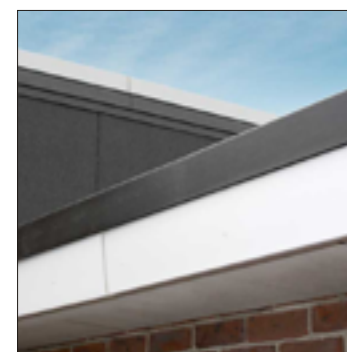
IKO Etherm XPS Upstand Board

IKO Etherm XPS Upstand Board is a laminate of IKO Etherm high-performance, rigid extruded polystyrene (XPS), with a tough, weather resistant facing board. IKO Etherm XPS Upstand Board is used for the thermal insulation and protection of upstand and parapet walls.



IKO Etherm MW Upstand Board

IKO Etherm MW Upstand Board is a laminate of a dense, stone wool insulation slab bonded to a tough, weather resistant facing board. It is used for the thermal insulation and protection at upstands, parapet walls and protrusions where a non-combustible insulation solution is required.



IKO GRP Edge Trim - A (for asphalt)

IKOtrim GRP Roof Edge Trims are manufactured from pultruded glass fibre reinforced polyester resin. The trims are thermally inert with a low coefficient of expansion. The adaptability of the IKOtrim range means they can be used with all types of mastic asphalt roofing.



IKO Paving Support Shims and Pads

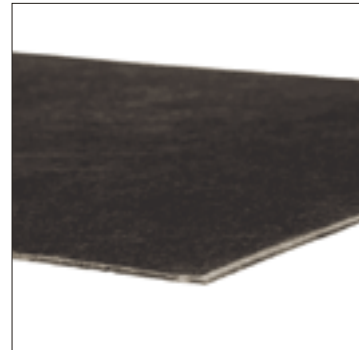
IKO Paving Support Shims offer a finer level of support providing a height of 3mm per shim. IKO Paving Support Pads incorporate spacing nibs to maintain a consistent drainage gap between pavings.

They are easily divided into halves and quarters, for use at edges and corners of paved areas. IKO Paving Support Shims and Pads are primarily for use on slightly uneven flat roof areas.



IKO Adjustable Paving Supports

IKO Adjustable Paving Support Pads are designed to be used where fine adjustment in height is required in order to obtain a level paved area on a roof deck. This is normally the case where the roof has been laid to falls for drainage, or where the deck is uneven.



IKO Protectoboard

A 3.2mm thick protection board fabricated with a bituminous core and glass fibre reinforcement. It exhibits high strength, excellent puncture resistance and a non-compressive nature. IKO Protectoboard is laid beneath IKO paving supports and loose laid paving slabs installed on mastic asphalt roofing.



SINGLE PLY (POLYMERIC) SYSTEMS



IKOfix Fixings

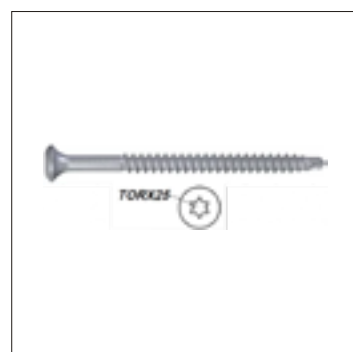
Insulation Fixing Tubes

Used in conjunction with the IKOfix Universal or Concrete Fasteners for securing thermal insulation in a layout as indicated by the project specific IKO Polymeric wind uplift calculation.



Membrane Fixing Tubes

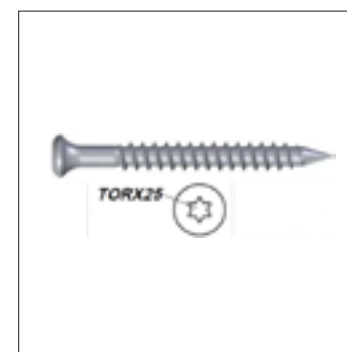
Used in conjunction with the IKOfix Universal or Concrete Fasteners for securing membranes in a layout as indicated by the project specific IKO Polymeric wind uplift calculation.



Universal Fixings

IKOfix Universal Fasteners are carbon steel fasteners used for securing membranes and insulation boards into steel substrates up to 2 x 1.25mm thick, or timber substrates such as plywood and OSB. They are typically used in conjunction with IKOfix Pressure Plates or thermally broken tube washers.

IKOfix Universal Fasteners can also be used without pressure plates for securing other ancillary items, such as peelstop bars, toothed flatbars or sections of membrane coated metal.



Concrete Fixings

IKOfix Concrete Fasteners are used for securing membranes and insulation boards into concrete substrates. They are used in conjunction with IKOfix Pressure Plates or thermally broken tube washers.

IKOfix Concrete Fasteners can also be used without pressure plates for securing other ancillary items, such as peelstop bars, toothed flatbars or sections of membrane coated metal.

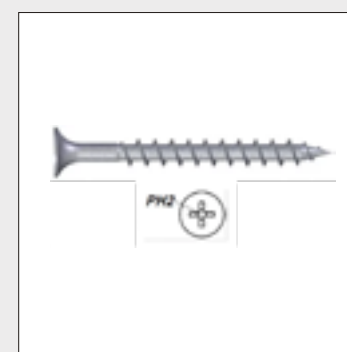


Metal Pressure Plates

IKOfix Pressure Plates are made of high quality, coated steel and are used in conjunction with IKOfix fasteners to secure membranes and insulation, in accordance with the IKO wind uplift calculation.

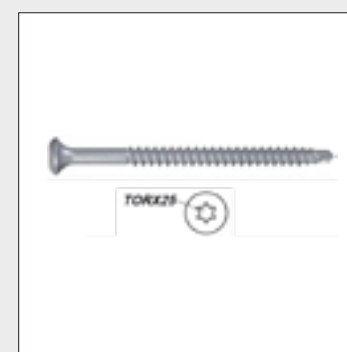
IKOfix Insulation Pressure Plates are 75mm diameter pressure plates made of high quality, coated steel. They are used to secure a wide range of thermal insulation products.

IKOfix Membrane Pressure Plates are available in a 50mm diameter, or 82mm x 40mm oval plates are available for use on hard substrates, such as plywood or OSB. They can also be used on compressible insulation substrates.



Cold Roof Fixings

Used for securing membranes, in conjunction with IKOfix Pressure Plates, into timber, plywood or OSB substrates. Can also be used without pressure plates for securing other ancillary items, such as peelstop bars, toothed flatbars or sections of membrane coated metal.



Stainless Steel Fixings

Used for securing membranes and insulation boards, in conjunction with IKOfix Pressure Plates or thermally broken tube washers, into steel substrates up to 2 x 1.25mm thick or timber substrates such as plywood and OSB.

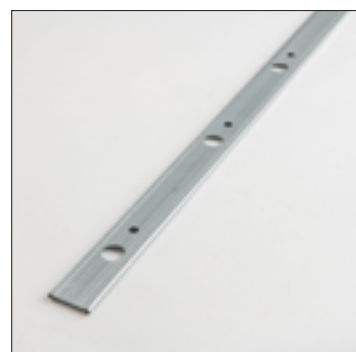
They can also be used without pressure plates for securing other ancillary items, such as peelstop bars, toothed flatbars or sections of membrane coated metal.



Flatbar Toothed

Used for securing IKO Armourplan membranes at the perimeter of a mechanically fixed or ballasted IKO Polymeric roofing system.

It should be installed at the roof perimeter, the base of upstands and penetrations, and all changes in direction. Suitable IKOfix fasteners must be used in accordance with IKO Polymeric technical guidelines.



Peelstop

Used for securing IKO Armourplan membranes at the perimeter of an adhered IKO Polymeric roofing system. It should be installed at the roof perimeter and at the base of upstands/penetrations, using suitable IKOfix fasteners in accordance with IKO Polymeric technical guidelines.



Upstand Clamping Strip

Used for securing the Armourplan membranes at the top of an adhered upstand. Allows for a bead of sealant to be applied to the upper edge in order to maintain a watertight termination against the substrate.



Rainwater Outlets

IKO Trendy

IKO Trendy outlets enable direct connection to pipes with a push-in spigot for conventional through the roof gravity drainage, in accordance with EN 1451-1 and EN 1124-2. They are available with pre-fitted flanges of the appropriate waterproofing material – IKO Armourplan or Bituminous Vapour Control Layer – to enable an effective waterproof detail.

When used with an IKO Trendy extension unit, the outlet can provide a reliable airtight seal in conjunction with the VCL and thermal insulation (up to 320mm thick).



IKO Easyflow

Rainwater outlets with foamed-in connecting sleeves to create a seamless, easy and reliable connection to a roof's polymeric waterproofing system when draining the rainwater through parapet walls to external drainage hoppers. Piping may be extended to any required length using the IKO Easyflow connecting pipe system.

A leaf grate is included with the rainwater outlet, providing a comprehensive drainage solution for your flat roofing structure.



PVC Vertical Outlets

IKO Armourplan rainwater outlets are pre-formed vertical drop outlets manufactured from rigid injection moulded PVC. Available in a wide range of diameters. PVC vertical outlets provide a secure hot air welded solution to roof top drainage, when used in conjunction with IKO Armourplan membranes.



PVC Refurb Outlets

Pre-formed vertical drop outlets manufactured from injection moulded flexible PVC and available in a wide range of diameters. They can be pushed into an existing rainwater outlet, or downpipe in refurbishment applications, where the fins can provide a watertight seal to the inside of the existing outlet.

Refurb outlets provide a secure hot air welded solution to roof top drainage, when used in conjunction with IKO Armourplan membranes.



PVC Angle Drain

IKO Armourplan parapet outlets are pre-formed angle drains manufactured from injection moulded PVC. Available in a wide range of diameters.



Adjustable Leaf Guard

IKO Adjustable Leaf and Gravel Guard is manufactured from robust polyamide material. It is suitable for new build and refurbishment vertical drop rainwater outlets. Spigot diameters from 60mm to 200mm. Easily adjusted to fitting. No tooling necessary.



Cleaners

PVC Lap Cleaner

IKO Armourplan PVC Lap Cleaner is a solvent based solution. It is used to ensure a satisfactory hot air weld is achieved between Armourplan membranes that are contaminated by moisture and building site dust and dirt. It can also be used as a general cleaner to remove dirt or wet adhesives.



Armourprep

An acetone based solution used to achieve a satisfactory hot air weld between Armourplan membranes heavily contaminated by long-term exposure to moisture, building site dust and dirt.



Additional Accessories

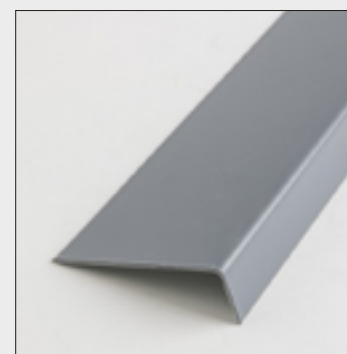
IKO Strike Clips

IKO Strike PVC Lightning Conductor Clips are hot air welded to the surface of an IKO Polymeric membrane roof at 1m centres. The IKO Strike Clip is designed to grasp uncoated lightning conductor tapes with a section of 25mm wide x 3mm thick.



Standing Seam Profiles

IKO Armourplan PVC Standing Seam Profiles are preformed profiles used to simulate a metal standing seam joint. The profile is manufactured from PVC and is hot air welded to the installed IKO Armourplan membrane at a layout specified by the client.



Armourplan Coated Metal

IKO Armourplan Membrane Coated Metal is a galvanised steel substrate factory laminated with IKO Armourplan membrane. The coated metal is available in sheet form and can be fabricated off-site to form perimeter details, such as drip edges and upstands.

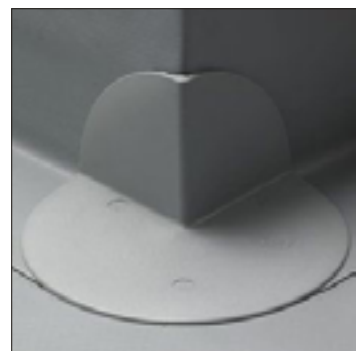
The PVC membrane surfacing on the metal enables IKO Armourplan PVC membranes to be heat welded to preformed edge details. This ensures the perimeters are fully sealed and waterproofed.



Armourplan Walkway Membrane

Hot-air welded to the roof surface in a layout specified by the client, this chevron patterned walkway membrane provides a slip-resistant surface. It also provides additional protection to the waterproof membrane in areas where mechanical damage is more likely to occur.

IKO Armourplan Walkway Membrane can be installed over mechanically fastened or adhered IKO Armourplan roofing systems.



Preformed Corners

IKO Polymeric offers a range of off the shelf and bespoke pre-fabricated PVC details to make the installation of an Armourplan roofing system simpler, quicker and more aesthetically pleasing.



Armourplan PVC Sealant

IKO Armourplan PVC Sealant is a single part, neutral cure, silicone sealant designed to be used with Armourplan membranes. It cures on exposure to moisture vapour, forming an elastic silicone rubber.



Paving Support Pad

IKO Paving Support Pads incorporate spacing nibs to maintain a consistent drainage gap between pavings. They are easily divided into halves and quarters for use at edges and corners of paved areas. IKO Paving Support Pads are primarily used on consistent and level flat roof areas.

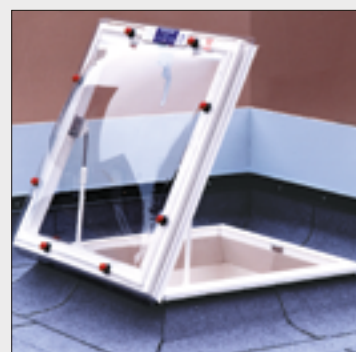


Adjustable Paving Support Pad

IKO Adjustable Paving Support Pads are designed to be used where fine adjustment in height is required to obtain a level paved area on a roof deck. This is normally the case where the roof has been laid to falls for drainage, or where the deck is uneven.



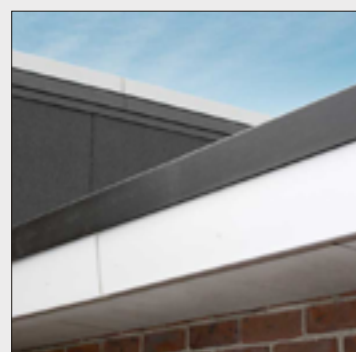
REINFORCED BITUMINOUS MEMBRANE SYSTEMS



IKO Superlite Rooflight

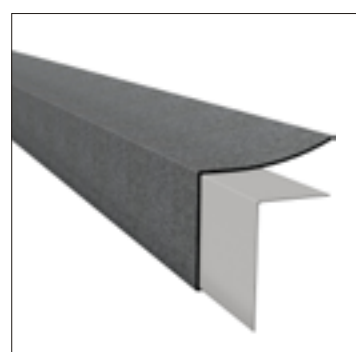
IKO Superlite Rooflights are a range of high-quality, triple glazed, and UV-protected thermoformed polycarbonate domes, as well as a vast range of multi-cell white PVC upstands.

The whole unit U-Value exceeds the requirements of Approved Document L 2006. The polycarbonate dome is non-fragile and fire rated in accordance with EN13501-1. Suitable for installation in a bituminous membrane, polymeric single ply or mastic asphalt system. Double skin domes are also available.



IKO GRP Edge Trim – F (for RBM)

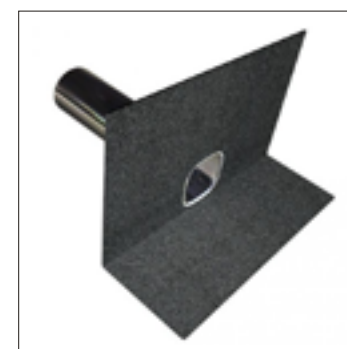
IKOtrim GRP Roof Edge Trims are manufactured from pultruded glass fibre reinforced polyester resin. The trims are thermally inert with a low coefficient of expansion. The adaptability of the IKOtrim range means they can be used with all types of bituminous roofing membranes.



IKO Pre-formed Drip Edge Detail

IKO Preformed Drips comprise of a 0.8mm galvanised steel backing, which is factory laminated with a SBS modified bituminous membrane and has a mineral finish. The bituminous membrane extends beyond the steel base to allow a lap joint with the main waterproofing membrane to be created.

The IKO Preformed Drips are designed to be a rapid and secure finish to the perimeter detailing of bituminous membrane flat roofing systems. The standard units are designed to fit most open perimeter details and are fully compatible with most IKO specified roofing systems.



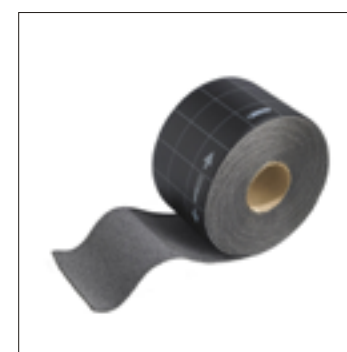
IKO ULTRA and IKO Standard Internal Refurbishment Rainwater Outlets

Rainwater outlets for use within new build and refurbishment flat roofing, balcony and terrace applications. Our 'elite' rainwater outlets, together with ancillary components, are only suitable for use within IKO reinforced bitumen membrane systems and IKO cold applied liquid systems on new build projects.



IKO Internal Rainwater Outlets – Alutec

Designed for applications where an angle is formed by the intersection of vertical and horizontal surfaces (for example, where a balcony or roof meets a parapet wall). They can be installed to provide either vertical or horizontal run-offs and are suitable for use with most types of waterproofing membrane.



IKO Flash – Cover Flashing

IKOfash is a lead-free flashing material which is ideal for use in areas such as chimney and abutment flashings, roof lights and pitched valley linings. IKOfash is extremely easy to install and offers a modern alternative in situations where lead flashing would traditionally be used.



IKOpro Stickall Mastic

IKOpro Stickall is a dense, all weather, bituminous sealing glue that remains plastic under normal temperatures and adheres well to most building surfaces, including wet surfaces. It is a multi-purpose product with high permanent adhesive strength, good UV stability and resistance to sagging at high temperatures.



IKO Lightning Conductor Clips – RBM

The IKO Lightning Conductor Clips are easy to install and offer safe and secure bonding. Specially designed and manufactured to allow for thermal movement of the conductor and are fully compatible with all roofing systems.



IKO Paving Support Shims and Pads

IKO Paving Support Shims offer a finer level of support providing a height of 3mm per shim. IKO Paving Support Pads incorporate spacing nibs to maintain a consistent drainage gap between pavings.

They are easily divided into halves and quarters, for use at edges and corners of paved areas. IKO Paving Support Shims and Pads are primarily for use on slightly uneven flat roof areas.



IKO Adjustable Paving Supports

IKO Adjustable Paving Support Pads are designed to be used where fine adjustment in height is required in order to obtain a level paved area on a roof deck. This is normally the case where the roof has been laid to falls for drainage, or where the deck is uneven.



IKO Integrated Fixing Point

IKOfix Integrated Fixing Point provides a structural connection to the building substrate whilst maintaining the integrity of the capsheet. It is fixed to the substrate through the roofing membrane using appropriate fixings.

Designed for use on cold and warm roof constructions and can be used for applications where a connection to the building structure is required, such as using solar PV or solar thermal panels.



IKO Roofport

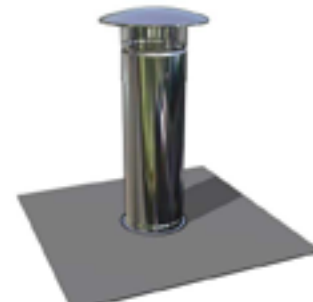
A preformed roof penetration unit that provides a versatile solution for allowing small cabling and lightning conductors to pass through a roof without compromising the waterproofing integrity. The powder coat cover unit is completely removable allowing easy installation of cabling.



IKO Roofbox

The ROOFBOX® weathering system is specifically engineered for service penetrations, offering a proprietary and assured resolution to the challenges typically encountered when passing pipes, cables, and ducts through the waterproofing layer on the roof.

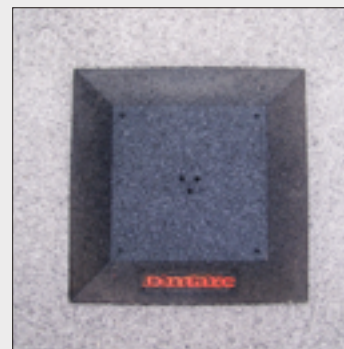
Tailored for each project, our roof cabinets are designed to be standard, modular, prefabricated, and suitable for retrofit applications. These modern insulated units are constructed from aluminium and coated with powder.



IKO Soil Vent Pipe Cover Units

IKO Soil Vent Cover Units are manufactured from stainless steel, with a factory applied sanded SBS bitumen flange that is sandwiched between underlay and capsheet layers in bitumen felt flat roof build-ups.

It is used for the flashing of soil vent pipes, by offering an airtight extension to it above the roof and protecting/concealing the unsightly pipe penetrating a flat roof construction.



IKO D-Marc

IKO D-Marc is a wind-resistant demarcation system for flat roofs. Applications consist of preventing access to hazards during roof maintenance, or to provide safe access across the roof. Wherever roof access is required a safe route must be created, identified by a demarcation system.



IKO Free Standing Handrail System

The IKOrail range of guardrail edge protection systems is ideal for fall protection on flat roof areas. IKOrail offers system solutions for different roof edge conditions and all systems are supplied in kit form, making them quick and simple to install.

Systems comprise the minimum number of well-scoped components, facilitating ease of specification and ordering. The innovative modular design eliminates the need for costly on-site bending and welding.



IKOfash-e Lead Free Flashing

IKOfash-e is a lead replacement product with the same look and feel of traditional lead. IKOfash-e has no harmful effects on people and the environment and is a second-generation lead replacement that is very easy to use. IKOfash-e is applied in exactly the same way as normal lead and is equivalent to Lead Code 5. The product has a guarantee for 20 years and a lifetime expectancy of 50 years.



IKOfash-e Adhesive

IKOfash-e Adhesive is a cold-applied, hybrid polymer-based adhesive sealant with high initial bond strength for bonding and sealing IKOfash-e Lead Free Flashing. It bonds without primer on almost all materials used in the construction industry, such as concrete, brick, aluminium, galvanised and stainless steel etc.



HIGHWAYS & CIVILS SYSTEMS

Permatrack APJ Binder 12kg

Permatrack APJ Binder is a hot-applied, highly flexible and specially formulated elastomeric, polymer and rubber bituminous compound. Used as the bituminous binder for Flexible Plug Joints on bridges.

- 12kg blocks
- 80 blocks per pallet
- 960kg per pallet

20mm 65+psv Pre-Coated Chippings

20mm 65+psv pre-coated chippings are selected and graded hard stone aggregate coated in a thin layer of bitumen to provide adhesion. Used to provide skid resistance and texture depth. Supplied in bags.

- 25kg bags
- 40 bags per pallet
- 1,000kg per pallet

6mm Pre-Coated Chippings

6mm pre-coated chippings are selected and graded hard stone aggregate of high PSV. They are coated in a thin layer of bitumen to provide adhesion. Used to provide skid resistance and texture depth. Supplied in large dumpy bags – approximately 1,000kg per bag.

6mm Granite (Bagged)

6mm granite is a selected and graded hard stone aggregate to be incorporated into re-melted Permatrack H blocks. Supplied in bags.

- 25kg bags
- 50 bags per pallet
- 1,250kg per pallet

10mm Granite

10mm granite is a selected and graded hard stone aggregate to be incorporated into Permatrack Bridge Deck Surfacing blocks. Supplied in bags.

- 25kg bags
- 50 bags per pallet
- 1,250kg per pallet

Rubbing Sand

Rubbing sand is fine graded and used for rubbing into the surface of hot mastic asphalt. This is done to remove laitance bitumen rich surface and to provide a degree of slip resistance for pedestrian traffic. Supplied in 25kg bags.

Galvanised Steel Plates 2mm

Galvanised steel plates are mild steel strips with a galvanised zinc coating. They are used as a bridging plate over air gaps to provide support in the Permatrack H Bridge Expansion Joint System. 1.25m x 200mm x 2mm.

Limestone Powder

Limestone powder is fine limestone aggregate used to line buckets prior to filling with mastic asphalt material, in order to act as a release agent. Supplied in 25kg bags.

Pre-Formed Drainage Channel 2.5m

Pre-formed drainage channels are 2.5-metre-long mild steel strips with a galvanised zinc coating. Used to provide sub-surface pressure relief in Permatrack H Bridge Expansion Joints.

Permatrack Hot Charge Carriage

Used for delivery of hot charge material to project sites. Size of delivery is measured in tonnes.





THE IKO SERVICE

From pre-project design advice through to completion, guarantees and aftercare, IKO's experienced and friendly team will guide you through each stage of any project with an all-round support service.



Consultation

We start by listening to you, your requirements and your brief for the project



Survey

Carried out by our IKO skilled and experienced business managers



Design

Bespoke to your project requirements and the results of the survey



Solution

The result of stages 1-3 culminating in the right IKO specification for your project



Installation

Reassurance that your project will be installed by vetted, Approved IKO Contractors



Inspection

Visits to site before and during the project to achieve a quality, reliable installation



Guarantee

A long-term commitment from you deserves an equally long-term commitment from us



Aftercare

The final step, making sure your investment delivers years of faultless service

For further information, contact IKO's Technical Services team on 01257 255771 or technical.uk@iko.com

PROTECTING WHAT MATTERS

As a responsible UK manufacturer of innovative road repair and maintenance solutions, we aim to limit the environmental impact of our operations and lifecycle of our products, from maximising energy efficiency and minimising waste to locally sourcing raw materials and reducing carbon emissions from transportation. All IKO manufacturing sites in the UK now also run on renewable energy.

IKO continues to make significant strides forward

We have committed to a programme of continuous improvements that apply to our ways of working, manufacturing and initiatives to reduce, reuse and recycle materials. This includes investing in more sustainable packaging and recycling on-site asphalt and hot charge waste at our Grangemill plant, which enabled us to achieve 100% zero waste-to-landfill in 2021/2022.

Helping our customers meet their sustainability targets

Our R&D and product development teams continue to evolve and grow our portfolio of responsibly sourced products. Within the hot melt sector alone, IKO has been responsible for pioneering the market in terms of environmental responsibility, starting with the first UK-manufactured hot melt waterproofing system in 2002. This was followed by other leading innovations, such as zero waste packaging, anti-root and specially-formulated compounds, allowing for lower application temperatures on-site.

Meeting our wider ESG goals

We have introduced a number of initiatives as part of our wider ESG framework, ranging from installing bug hotels and nurturing the talent of the future, to offering mental health support to all IKO people. However, we haven't stopped there – our efforts extend beyond our employees.

Whether it's the people who live in the communities around our manufacturing sites, or those who work, live or learn under our roofing and waterproofing solutions, we aim to protect what matters to them most and create a positive legacy.

[Learn more about our ESG journey](#) →



BES 6001
Responsible Sourcing
www.greenbooklive.com



IKO PLC (Head Office)

Appley Lane North
Appley Bridge
Wigan
WN6 9AB

t: 01257 255771

e: getintouch.uk@iko.com

IKO Polymeric

Coney Green Road
Clay Cross
Chesterfield
S45 9HZ

IKO HMMA

Prospect Quarry
Grangemill
Matlock
Derbyshire
DE4 4BW

IKOGROUP.CO.UK

Whilst every care is taken to see that the information given in this literature is correct and up to date it is not intended to form part of any contract or give rise to any collateral liability, which is hereby specifically excluded. Intending purchasers of our materials should therefore verify with the company whether any changes in our specification or application details or otherwise have taken place since this literature was issued.

January 2024