

# IKO Stainless Steel Outlets

## Technical Data Sheet – Section 16.30

### DESCRIPTION

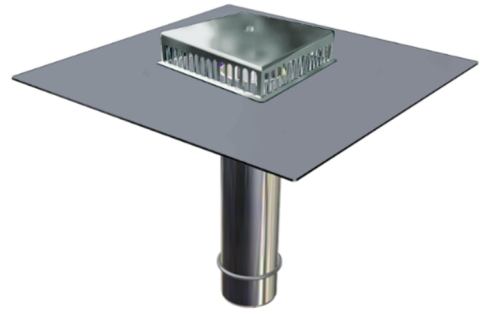
IKO Stainless Steel Outlets are pre-formed vertical drop and parapet outlets available in a wide range of diameters. They offer a secure hot-air welded solution for rooftop drainage, specifically designed for use with IKO PVC and TPE membranes.

### USE

Vertical drop outlet with factory bonded membrane flange for use in both new build and refurbishment projects.

Purchased and applied by IKO Approved contractors and installers.

All work must be undertaken in accordance with the requirements of the specific information provided with the issued IKO Specification document, or guidance documents where applicable.



### FEATURES & BENEFITS

- PVC & TPE factory bonded membrane flange for ease of application
- Membrane colour to match roof
- High performance for increased flow rates
- Suitable for new and refurbishment projects
- Leaf guards and extension pipes available

### OPTIONS

#### IKO Stainless Steel Outlets for Armourplan PVC

Type of Outlet	Product Code	Outlet Dia Ø	PVC Membrane Flange	Spigot Length
Vertical	15100070	70mm	350mm x 350mm	400mm
	15100090	90mm	350mm x 350mm	400mm
	15100095	95mm	350mm x 350mm	400mm
	15100110	110mm	350mm x 350mm	400mm
	15100125	125mm	350mm x 350mm	400mm
Parapet	15200075	75mm	350mm x 350mm	400mm
	15200110	110mm	350mm x 350mm	400mm

#### IKO Stainless Steel Outlets for Spectraplan TPE

Type of Outlet	Product Code	Outlet Dia Ø	TPE Membrane Flange	Spigot Length
Vertical	15021070	70mm	350mm x 350mm	400mm
	15021090	90mm	350mm x 350mm	400mm
	15021110	110mm	350mm x 350mm	400mm
	15021125	125mm	350mm x 350mm	400mm
Parapet	15100070	75mm	350mm x 350mm	400mm
	15100110	110mm	350mm x 350mm	400mm

## FLOW RATES

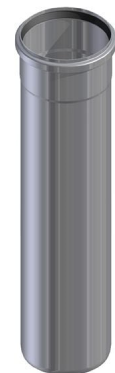
Description	Outlet Dia Ø	Flow Rate (litres/second)
IKO Stainless Steel Vertical Outlets	70mm	3.55l/s
	90mm	4.3l/s
	95mm	6.68l/s
	110mm	10.70l/s
	125mm	6.89l/s
IKO Stainless Steel Parapet Outlets	75mm	0.63l/s
	110mm	1.06l/s

Outlet flow rates with leaf guards are based on a water depth of 35mm above the invert level of the outlet as recommended by UK design standard BS EN 12056-3:2000. If required, greater flow rates can be achieved if the outlets are sumped.

## EXTENSION PIPES

Manufactured from high quality stainless steel, the simple to install extension pipe is designed to increase the length of the standard 400mm spigot on an IKO Stainless Steel Parapet Outlet where needed to pass through a larger cavity. The built in rubber gasket will create a watertight seal for the push fit connection.

Description	Product Code	Dia Ø	Spigot Length
Extension Pipe 75/250	58075250	75mm	250mm
Extension Pipe 75/500	58075500	75mm	500mm
Extension Pipe 110/250	58110250	110mm	250mm
Extension Pipe 110/500	58110500	110mm	500mm



## ADJUSTABLE LEAF GUARD

The adjustable leaf guard is manufactured from polypropylene meaning it is strong, effective, and corrosion resistant. It clamps securely to the inside of the outlet stem.

Description	Product Code	Dia Ø
Adjustable Leaf Guard	45100002	260mm
Adjustable Parapet Leaf Guard	45100001	225mm x 100mm



## INSTALLATION

Select the correct size of outlet to suit the size of the downpipe, a tight seal of the 'O' ring must be achieved. Mechanically fix the stainless-steel flange through the pre-drilled fixing locations using suitable IKOfix fasteners.

Once secured, the integrated membrane flange can be hot air welded to the field membrane ensuring of a minimum 40mm fully welded lap to all sides.

As this product is utilised within an Approved Contractor network and guided by an IKO Specification document, where omission or differing information exists, the IKO Specification document will take precedence.

Once installed IKO will not be held liable for any such claims regarding colour variations, unless proven by IKO to be a product failure.

## MAINTENANCE & REPAIR

IKO Technical Services recommend that their flat roofs and waterproofing systems are inspected and maintained in accordance with the guidelines given in BS6229.

BS6229 gives guidance on the content of maintenance manuals and the scope and frequency of routine maintenance inspections applicable to all flat roofing and waterproofing finishes. A flat roof should be inspected at least twice yearly; in autumn to ensure it is clear of leaves, dirt and debris, outlets are not blocked and the roof is free draining; in spring to discover and rectify any damage due to weather. Green, blue and other specialist roofs should be inspected in accordance with the designer's original inspection plan.

## OTHER RELEVANT DOCUMENTATION

Where applicable, Material Safety Data Sheets (MSDS), Declaration of Performances (DoPs), and Third-Party Accreditations are available to view and download from the IKO website Resource Centre:

<https://ikogroup.co.uk/resource-centre/>

## PRODUCT SUPPORT

Should you have any queries in relation to this product please contact one of the relevant teams below:

**Technical**      [technical.ab@iko.com](mailto:technical.ab@iko.com)

- For Reinforced Bitumen Membranes, IKOpro and Flexia Liquid Applied Waterproofing, Pitched Roofing, IKO Hyload Structural Waterproofing

[technical.ma@iko.com](mailto:technical.ma@iko.com)

- For Mastic Asphalt

[technical.cc@iko.com](mailto:technical.cc@iko.com)

- For Single Ply and Permatec Hot Melt

**Sales**            [sales.uk@iko.com](mailto:sales.uk@iko.com)

**Marketing**      [getintouch.uk@iko.com](mailto:getintouch.uk@iko.com)

## COMPANY ACCREDITATIONS

IKO PLC, a roofing, waterproofing, and insulation company, holds various accreditations that demonstrate its commitment to quality, safety, and environmental responsibility. These include ISO certifications for quality management and occupational health and safety, British Board of Agrément (BBA) accreditations for specific products and systems, and Factory Mutual (FM) approval for certain roofing systems.

All our manufacturing plants have BS EN ISO 9001, BS EN ISO 14001, BS EN ISO 45001, and BES 6001 accreditation, meaning we match the quality and sustainability requirements and use responsibly sourced raw materials in our production. We also re-use by-products from manufacture, wrap products in minimal packaging, and we employ a streamlined transportation network.



IKO is also a leading member of all relevant trade associations such as NFRC, BFRA, SPRA, LRWA, MAC, RSTA, BJA and LCRIG having technical experts within the technical and standards committees to help us get informed first-hand about recent updates on technical requirements for the design and installation of roofing, waterproofing, road and bridge maintenance industry products.



## **DISCLAIMER**

Whilst every precaution is taken to ensure that the information given in this literature is correct and up-to-date it is not intended to form part of any contract or give rise to any collateral liability, which is hereby specifically excluded.

IKO reserves the right to amend and/or withdraw this document without notice.

Intending purchasers of our materials should therefore verify with the company whether any changes in our specification, application details, withdrawals or otherwise have taken place since this literature was published.